

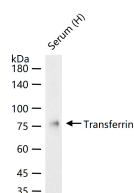
bsm-61182R**[Primary Antibody]**

www.bioss.com.cn

sales@bioss.com.cn

techsupport@bioss.com.cn

400-901-9800

Transferrin Recombinant Rabbit mAb**— DATASHEET —****Host:** Rabbit**Isotype:** IgG**Clonality:** Recombinant**CloneNo.:** 2C12**GeneID:** 7018**SWISS:** P02787**Target:** Transferrin**Immunogen:** A synthesized peptide derived from human Transferrin: 100-150/698.**Purification:** affinity purified by Protein A**Storage:** 10mM phosphate buffered saline(pH 7.4) with 150mM sodium chloride, 0.05% BSA, 0.02% Proclin300 and 50% glycerol. Store at 4°C for short term. Store at -20°C for long term. Avoid repeated freeze/thaw cycles.**Background:** Transferrins are iron binding transport proteins which can bind two Fe³⁺ ions in association with the binding of an anion, usually bicarbonate. It is responsible for the transport of iron from sites of absorption and heme degradation to those of storage and utilization. Serum transferrin may also have a further role in stimulating cell proliferation.**Applications:** WB (1:500-2000)**IHC-P** (1:100-200)**IHC-F** (1:100-200)**IF** (1:100-200)**Flow-Cyt** (1:50-100)**Reactivity:** Human**Predicted MW.:** 77**— VALIDATION IMAGES —**

25 ug total protein per lane of various lysates
(see on figure) probed with Transferrin
monoclonal antibody, unconjugated
(bsm-61182R) at 1:1000 dilution and 4°C
overnight incubation. Followed by conjugated
secondary antibody incubation at r.t. for 60 min.