

bsm-61181R**[Primary Antibody]****BioSS**
ANTIBODIES

www.bioss.com.cn

sales@bioss.com.cn

techsupport@bioss.com.cn

400-901-9800

beta 4B/2A/2B Tubulin Recombinant Rabbit mAb**— DATASHEET —**

Host: Rabbit
Clonality: Recombinant
GeneID: 10383
Target: beta 4B/2A/2B Tubulin

Isotype: IgG
CloneNo.: 10B7
SWISS: P68371,Q13885,Q9BVA1

Immunogen: A synthesized peptide derived from human beta 4B Tubulin: 400-445/445.

Purification: affinity purified by Protein A

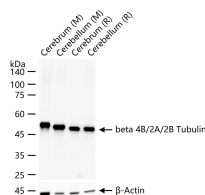
Storage: 10mM phosphate buffered saline(pH 7.4) with 150mM sodium chloride, 0.05% BSA, 0.02% Proclin300 and 50% glycerol. Store at 4°C for short term. Store at -20°C for long term. Avoid repeated freeze/thaw cycles.

Background: Tubulin is the major constituent of microtubules. It binds two moles of GTP, one at an exchangeable site on the beta chain and one at a non-exchangeable site on the alpha chain.

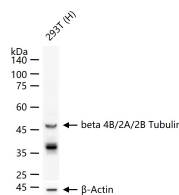
Applications: **WB** (1:500-2000)
IHC-P (1:100-200)
IHC-F (1:100-200)
IF (1:50-200)
Flow-Cyt (1:50-100)
ICC/IF (1:50-200)
IP (1:20-50)

Reactivity: Human, Mouse, Rat

Predicted MW.: 50

— VALIDATION IMAGES —

25 ug total protein per lane of various lysates (see on figure) probed with beta 4B/2A/2B Tubulin monoclonal antibody, unconjugated (bsm-61181R) at 1:1000 dilution and 4°C overnight incubation. Followed by conjugated secondary antibody incubation at r.t. for 60 min.



25 ug total protein per lane of various lysates (see on figure) probed with beta 4B/2A/2B Tubulin monoclonal antibody, unconjugated (bsm-61181R) at 1:1000 dilution and 4°C overnight incubation. Followed by conjugated secondary antibody incubation at r.t. for 60 min.