

bsm-61178R

[Primary Antibody]

Maltose binding protein Recombinant Rabbit mAb

Bioss
ANTIBODIES

www.bioss.com.cn

sales@bioss.com.cn

techsupport@bioss.com.cn

400-901-9800

DATASHEET

Host: Rabbit

Isotype: IgG

Applications: WB (1:1000-2000)

Clonality: Recombinant

Reactivity: Escherichia Coli

Target: Maltose binding protein

Purification: affinity purified by Protein A

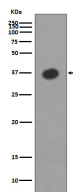
Storage: 10mM phosphate buffered saline(pH 7.4) with 150mM sodium chloride, 0.05% BSA, 0.02% Proclin300 and 50% glycerol. Store at 4°C for short term. Store at -20°C for long term. Avoid repeated freeze/thaw cycles.

Predicted MW.: 43

Background: Part of the ABC transporter complex MalEFGK involved in maltose/maltodextrin import. Binds maltose and higher maltodextrins such as maltotriose.

Subcellular Location: Cytoplasm

VALIDATION IMAGES



Western blot analysis of Escherichia coli lysate.
Using Maltose binding protein (bsm-61178R)
monoclonal antibody at 1:1000 dilution and 4°C
overnight incubation. Followed by conjugated
secondary antibody incubation at r.t. for 60 min.