

**bsm-61177R****[ Primary Antibody ]**

**Bioss**  
ANTIBODIES

www.bioss.com.cn

sales@bioss.com.cn

techsupport@bioss.com.cn

400-901-9800

## Somatostatin Receptor 2 Recombinant Rabbit mAb

### DATASHEET

**Host:** Rabbit**Isotype:** IgG**Clonality:** Recombinant**CloneNo.:** 8H1**GeneID:** 6752**SWISS:** P30874**Target:** Somatostatin Receptor 2**Immunogen:** A synthesized peptide derived from human SSTR2: 311-369.**Purification:** affinity purified by Protein A

**Storage:** 10mM phosphate buffered saline(pH 7.4) with 150mM sodium chloride, 0.05% BSA, 0.02% Proclin300 and 50% glycerol. Store at 4°C for short term. Store at -20°C for long term. Avoid repeated freeze/thaw cycles.

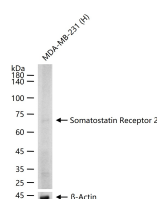
**Background:** Somatostatin acts at many sites to inhibit the release of many hormones and other secretory proteins. The biologic effects of somatostatin are probably mediated by a family of G protein-coupled receptors that are expressed in a tissue-specific manner. SSTR2 is a member of the superfamily of receptors having seven transmembrane segments and is expressed in highest levels in cerebrum and kidney.

**Applications:** WB (1:500-2000)**IHC-P** (1:50-200)**IHC-F** (1:50-200)**IF** (1:50-200)**IP** (1:20-50)**Reactivity:** Human, Mouse, Rat

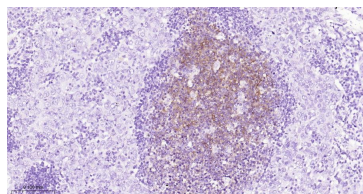
**Predicted**  
**MW.:** 41

**Subcellular**  
**Location:** Cell membrane

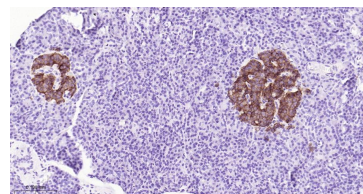
### VALIDATION IMAGES



25 ug total protein per lane of various lysates (see on figure) probed with Somatostatin Receptor 2 monoclonal antibody, unconjugated (bsm-61177R) at 1:1000 dilution and 4°C overnight incubation. Followed by conjugated secondary antibody incubation at r.t. for 60 min.



Paraformaldehyde-fixed, paraffin embedded Human Breast Cancer; Antigen retrieval by boiling in sodium citrate buffer (pH6.0) for 15 min; Antibody incubation with Somatostatin Receptor 2 Monoclonal Antibody, Unconjugated(bsm-61177R) at 1:200 overnight at 4°C, followed by conjugation to the bs-0295G-HRP and DAB (C-0010) staining.



Paraformaldehyde-fixed, paraffin embedded Human Pancreas; Antigen retrieval by boiling in sodium citrate buffer (pH6.0) for 15 min; Antibody incubation with Somatostatin Receptor 2 Monoclonal Antibody, Unconjugated(bsm-61177R) at 1:200 overnight at 4°C, followed by conjugation to the bs-0295G-HRP and DAB (C-0010) staining.