

bs-20435R**[Primary Antibody]****SIGLEC1 Rabbit pAb****Bioss**
ANTIBODIES

www.bioss.com.cn

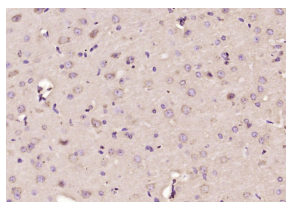
sales@bioss.com.cn

techsupport@bioss.com.cn

400-901-9800

— DATASHEET —

| | | |
|--|----------------------|--|
| Host: Rabbit | Isotype: IgG | Applications: IHC-P (1:100-500) IHC-F (1:100-500) IF (1:100-500) Reactivity: Mouse (predicted: Rat) Predicted MW.: 186 kDa Subcellular Location: Secreted ,Cell membrane |
| Clonality: Polyclonal | | |
| GeneID: 20612 | SWISS: Q62230 | |
| Target: SIGLEC1 | | |
| Immunogen: KLH conjugated synthetic peptide derived from mouse Sialoadhesin/CD169: 1301-1400/1709. < Extracellular > | | |
| Purification: affinity purified by Protein A | | |
| Concentration: 1mg/ml | | |
| Storage: 0.01M TBS (pH7.4) with 1% BSA, 0.02% Proclin300 and 50% Glycerol. Shipped at 4°C. Store at -20°C for one year. Avoid repeated freeze/thaw cycles. | | |
| Background: This gene encodes a member of the immunoglobulin superfamily. The encoded protein is a lectin-like adhesion molecule that binds glycoconjugate ligands on cell surfaces in a sialic acid-dependent manner. It is a type I transmembrane protein expressed only by a subpopulation of macrophages and is involved in mediating cell-cell interactions. Alternative splicing produces a transcript variant encoding an isoform that is soluble rather than membrane-bound; however, the full-length nature of this variant has not been determined. [provided by RefSeq, Jul 2008]. | | |

— VALIDATION IMAGES —

Paraformaldehyde-fixed, paraffin embedded (mouse brain tissue); Antigen retrieval by boiling in sodium citrate buffer (pH6.0) for 15min; Block endogenous peroxidase by 3% hydrogen peroxide for 20 minutes; Blocking buffer (normal goat serum) at 37°C for 30min; Antibody incubation with (Sialoadhesin) Polyclonal Antibody, Unconjugated (bs-20435R) at 1:200 overnight at 4°C, followed by operating according to SP Kit(Rabbit) (sp-0023) instructions and DAB staining.