

[Primary Antibody]



BioSS
ANTIBODIES

www.bioss.com.cn

sales@bioass.com.cn

techsupport@bioss.com.cn

400-901-9800

— DATASHEET

Host: Rabbit

Isotype: IgG

Clonality: Recombinant

CloneNo.: 13B18

GeneID: 567

SWISS: P61769

Target: beta 2 Microglobulin

Immunogen: A synthesized peptide derived from human beta 2 Microglobulin: 70-119/119.

Purification: affinity purified by Protein A

Storage: 10mM phosphate buffered saline(pH 7.4) with 150mM sodium chloride, 0.05% BSA, 0.02% Proclin300 and 50% glycerol. Store at 4°C for short term. Store at -20°C for long term. Avoid repeated freeze/thaw cycles.

Background: Major histocompatibility complex (MHC) class 1 molecules bind to antigens for presentation on the surface of cells. The proteasome is responsible for producing these antigens from the components of foreign pathogens. MHC class 1 molecules consist of an heavy chain that contains three subdomains ($\alpha 1$, $\alpha 2$, $\alpha 3$), and a non-covalent associating light chain, known as β -2-Microglobulin.

Applications: WB (1:500-2000)

ICC/IF (1:50-200)

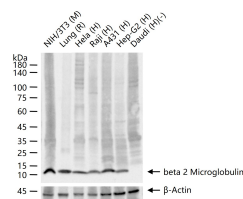
IP (1:20-50)

Reactivity: Human, Mouse, Rat

Predicted
MW.: 14

Subcellular Location: Secreted

— VALIDATION IMAGES



25 ug total protein per lane of various lysates (see on figure) probed with beta 2 Microglobulin monoclonal antibody, unconjugated (bsm-61163R) at 1:2000 dilution and 4°C overnight incubation. Followed by conjugated secondary antibody incubation at r.t. for 60 min.