

bsm-61159R**[Primary Antibody]****BioSS**
ANTIBODIES

www.bioss.com.cn

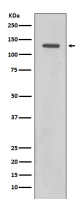
sales@bioss.com.cn

techsupport@bioss.com.cn

400-901-9800

RAD21 Recombinant Rabbit mAb**— DATASHEET —**

Host: Rabbit	Isotype: IgG	Applications: WB (1:500-2000) Flow-Cyt (1:50-100)
Clonality: Recombinant		Reactivity: Human, Mouse, Rat
GeneID: 5885	SWISS: O60216	
Target: RAD21		
Immunogen: A synthesized peptide derived from human RAD21: 600-631/631.		
Purification: affinity purified by Protein A		
Storage: 10mM phosphate buffered saline(pH 7.4) with 150mM sodium chloride, 0.05% BSA, 0.02% Proclin300 and 50% glycerol. Store at 4°C for short term. Store at -20°C for long term. Avoid repeated freeze/thaw cycles.		
Background: As a member of the cohesin complex, involved in sister chromatid cohesion from the time of DNA replication in S phase to their segregation in mitosis, a function that is essential for proper chromosome segregation, post-replicative DNA repair, and the prevention of inappropriate recombination between repetitive regions.		
		Predicted MW.: 72
		Subcellular Location: Nucleus

— VALIDATION IMAGES —

Western blot analysis of HeLa cell lysate. Using RAD21 (bsm-61159R) monoclonal antibody at 1:1000 dilution and 4°C overnight incubation. Followed by conjugated secondary antibody incubation at r.t. for 60 min.