

bs-20853R**[Primary Antibody]****SP140 Rabbit pAb****Bioss**
ANTIBODIES

www.bioss.com.cn

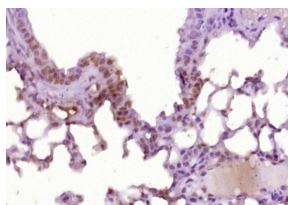
sales@bioss.com.cn

techsupport@bioss.com.cn

400-901-9800

— DATASHEET —

Host: Rabbit	Isotype: IgG	Applications: IHC-P (1:100-500) IHC-F (1:100-500) IF (1:100-500)
Clonality: Polyclonal		Reactivity: Mouse
Target: SP140		Predicted MW.: 20 kDa
Immunogen: KLH conjugated synthetic peptide derived from mouse SP140: 201-300/534.		Subcellular Location: Cytoplasm ,Nucleus
Purification: affinity purified by Protein A		
Concentration: 1mg/ml		
Storage: 0.01M TBS (pH7.4) with 1% BSA, 0.02% Proclin300 and 50% Glycerol. Shipped at 4°C. Store at -20°C for one year. Avoid repeated freeze/thaw cycles.		
Background: SP140 is an 867 amino acid cytoplasmic and nuclear protein that is highly expressed in spleen and peripheral blood leukocytes. SP140 is a component of the nuclear body that may be involved in trafficking between the nucleus and the cytoplasm. SP140 is induced by interferons and contains a bromo domain, a HSR domain, a PHD-type zinc finger and a SAND domain. It is thought that SP140 may participate in the pathogenesis of acute promyelocytic leukemia and viral infection. SP140 is expressed as three isoforms produced by alternative splicing and are designated isoform LYSp100-A, isoform LYSp100-B and isoform SP140.		

— VALIDATION IMAGES —

Paraformaldehyde-fixed, paraffin embedded (mouse lung tissue); Antigen retrieval by boiling in sodium citrate buffer (pH6.0) for 15min; Block endogenous peroxidase by 3% hydrogen peroxide for 20 minutes; Blocking buffer (normal goat serum) at 37°C for 30min; Antibody incubation with (SP140) Polyclonal Antibody, Unconjugated (bs-20853R) at 1:400 overnight at 4°C, followed by operating according to SP Kit(Rabbit) (sp-0023) instructions and DAB staining.