

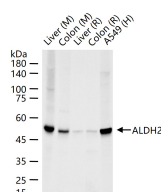
bsm-61151R**[Primary Antibody]****ALDH2 Recombinant Rabbit mAb****BioSS**
ANTIBODIES

www.bioss.com.cn

sales@bioss.com.cn

techsupport@bioss.com.cn

400-901-9800

— DATASHEET —**Host:** Rabbit**Isotype:** IgG**Clonality:** Recombinant**CloneNo.:** 5H8**GeneID:** 217**SWISS:** P05091**Target:** ALDH2**Immunogen:** A synthesized peptide derived from human ALDH2: 150-184.**Purification:** affinity purified by Protein A**Storage:** 10mM phosphate buffered saline(pH 7.4) with 150mM sodium chloride, 0.05% BSA, 0.02% Proclin300 and 50% glycerol. Store at 4°C for short term. Store at -20°C for long term. Avoid repeated freeze/thaw cycles.**Background:** Required for clearance of cellular formaldehyde, a cytotoxic and carcinogenic metabolite that induces DNA damage.**Applications:** **WB** (1:500-2000)
IP (1:20-50)**Reactivity:** Human, Mouse, Rat**Predicted**
MW.: 56**Subcellular**
Location: Cytoplasm**— VALIDATION IMAGES —**

25 ug total protein per lane of various lysates (see on figure) probed with ALDH2 monoclonal antibody, unconjugated (bsm-61151R) at 1:1000 dilution and 4°C overnight incubation. Followed by conjugated secondary antibody incubation at r.t. for 60 min.