

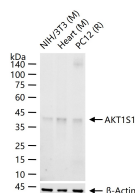
**bsm-61150R****[ Primary Antibody ]****AKT1S1 Recombinant Rabbit mAb****Bioss**  
**ANTIBODIES**

www.bioss.com.cn

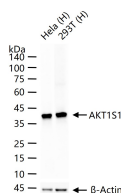
sales@bioss.com.cn

techsupport@bioss.com.cn

400-901-9800

**— DATASHEET —****Host:** Rabbit**Isotype:** IgG**Clonality:** Recombinant**CloneNo.:** 2G5**GeneID:** 84335**SWISS:** Q96B36**Target:** AKT1S1**Immunogen:** A synthesized peptide derived from human AKT1S1: 180-256/256.**Purification:** affinity purified by Protein A**Storage:** 10mM phosphate buffered saline(pH 7.4) with 150mM sodium chloride, 0.05% BSA, 0.02% Proclin300 and 50% glycerol. Store at 4°C for short term. Store at -20°C for long term. Avoid repeated freeze/thaw cycles.**Background:** Negative regulator of the mechanistic target of rapamycin complex 1 (mTORC1), an evolutionarily conserved central nutrient sensor that stimulates anabolic reactions and macromolecule biosynthesis to promote cellular biomass generation and growth.**Applications:** **WB** (1:500-2000)  
**IP** (1:20-50)**Reactivity:** Human, Mouse, Rat**Predicted  
MW.:** 27**Subcellular  
Location:** Cytoplasm**— VALIDATION IMAGES —**

25 ug total protein per lane of various lysates (see on figure) probed with AKT1S1 monoclonal antibody, unconjugated (bsm-61150R) at 1:1000 dilution and 4°C overnight incubation. Followed by conjugated secondary antibody incubation at r.t. for 60 min.



25 ug total protein per lane of various lysates (see on figure) probed with AKT1S1 monoclonal antibody, unconjugated (bsm-61150R) at 1:1000 dilution and 4°C overnight incubation. Followed by conjugated secondary antibody incubation at r.t. for 60 min.