

bsm-61148R**[Primary Antibody]****Bioss**
ANTIBODIES

www.bioss.com.cn

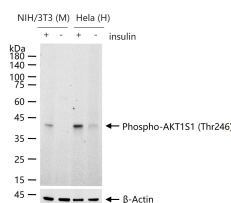
sales@bioss.com.cn

techsupport@bioss.com.cn

400-901-9800

phospho-AKT1S1 (Thr246) Recombinant Rabbit mAb**— DATASHEET —**

Host: Rabbit	Isotype: IgG	Applications: WB (1:500-2000) Reactivity: Human, Mouse Predicted MW.: 27 Subcellular Location: Cytoplasm
Clonality: Recombinant	CloneNo.: 11F12	
GeneID: 84335	SWISS: Q96B36	
Target: AKT1S1 (Thr246)		
Immunogen: A synthesized peptide derived from human AKT1S1 around the phosphorylation site of T246: PRLN-pT-SDF 237-249/256.		
Purification: affinity purified by Protein A		
Storage: 10mM phosphate buffered saline(pH 7.4) with 150mM sodium chloride, 0.05% BSA, 0.02% Proclin300 and 50% glycerol. Store at 4°C for short term. Store at -20°C for long term. Avoid repeated freeze/thaw cycles.		
Background: Negative regulator of the mechanistic target of rapamycin complex 1 (mTORC1), an evolutionarily conserved central nutrient sensor that stimulates anabolic reactions and macromolecule biosynthesis to promote cellular biomass generation and growth.		

— VALIDATION IMAGES —

NIH/3T3 (M) cells were treated with or without insulin (150nM) for 15 min, HeLa (H) cells were treated with or without insulin (100nM) for 5 min, 25 µg total protein per lane of cell lysates (see on figure) probed with Phospho-AKT1S1 (Thr246) monoclonal antibody, unconjugated (bsm-61148R) at 1:1000 dilution and 4°C overnight incubation. Followed by conjugated secondary antibody incubation at r.t. for 60 min.