

bsm-61146R**[Primary Antibody]****BioSS**
ANTIBODIES

www.bioss.com.cn

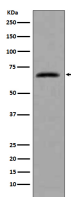
sales@bioss.com.cn

techsupport@bioss.com.cn

400-901-9800

CDC7 Recombinant Rabbit mAb**— DATASHEET —**

Host: Rabbit	Isotype: IgG	Applications: WB (1:500-2000) Flow-Cyt (1:50-100)
Clonality: Recombinant		Reactivity: Human, Mouse, Rat
GeneID: 8317	SWISS: O00311	
Target: CDC7		
Immunogen: A synthesized peptide derived from human CDC7: 1-54/574.		
Purification: affinity purified by Protein A		
Storage: 10mM phosphate buffered saline(pH 7.4) with 150mM sodium chloride, 0.05% BSA, 0.02% Proclin300 and 50% glycerol. Store at 4°C for short term. Store at -20°C for long term. Avoid repeated freeze/thaw cycles.		
Background: Kinase involved in initiation of DNA replication. Phosphorylates critical substrates that regulate the G1/S phase transition and initiation of DNA replication, such as MCM proteins and CLASPIN.		
		Predicted MW.: 64
		Subcellular Location: Nucleus

— VALIDATION IMAGES —

Western blot analysis of HeLa cells using CDC7 antibody. Using CDC7 (bsm-61146R) monoclonal antibody at 1:1000 dilution and 4°C overnight incubation. Followed by conjugated secondary antibody incubation at r.t. for 60 min.