

bsm-61143R**[Primary Antibody]****Angiotensinogen Recombinant Rabbit mAb****Bioss**
ANTIBODIES

www.bioss.com.cn

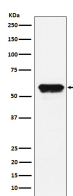
sales@bioss.com.cn

techsupport@bioss.com.cn

400-901-9800

— DATASHEET —

Host: Rabbit	Isotype: IgG	Applications: WB (1:1000-2000) Flow-Cyt (1:50-100) ICC/IF (1:50-200) IP (1:20-50) Reactivity: Human Predicted MW.: 52 Subcellular Location: Secreted
Clonality: Recombinant		
GeneID: 183	SWISS: P01019	
Target: Angiotensinogen		
Immunogen: A synthesized peptide derived from human Angiotensinogen: 50-100.		
Purification: affinity purified by Protein A		
Storage: 10mM phosphate buffered saline(pH 7.4) with 150mM sodium chloride, 0.05% BSA, 0.02% Proclin300 and 50% glycerol. Store at 4°C for short term. Store at -20°C for long term. Avoid repeated freeze/thaw cycles.		
Background: Essential component of the renin-angiotensin system (RAS), a potent regulator of blood pressure, body fluid and electrolyte homeostasis.		

— VALIDATION IMAGES —

Western blot analysis of HepG2 cell lysate. Using Angiotensinogen (bsm-61143R) monoclonal antibody at 1:1000 dilution and 4°C overnight incubation. Followed by conjugated secondary antibody incubation at r.t. for 60 min.