

[Primary Antibody]

Calmodulin 1 Recombinant Rabbit mAb



BioSS
ANTIBODIES

www.bioss.com.cn

sales@bioass.com.cn

techsupport@bioss.com.cn

400-901-9800

— DATASHEET

Host: Rabbit

Isotype: IgG

Clonality: Recombinant

CloneNo.: 8D11

GeneID: 801

SWISS: P0DP23

Target: Calmodulin 1

Immunogen: A synthesized peptide derived from human Calmodulin 1: 100-149.

Purification: affinity purified by Protein A

Storage: 10mM phosphate buffered saline(pH 7.4) with 150mM sodium chloride, 0.05% BSA, 0.02% Proclin300 and 50% glycerol. Store at 4°C for short term. Store at -20°C for long term. Avoid repeated freeze/thaw cycles.

Background: Calmodulin acts as part of a calcium signal transduction pathway by mediating the control of a large number of enzymes, ion channels, aquaporins and other proteins through calcium-binding. Calcium-binding is required for the activation of calmodulin.

Applications: WB (1:500-2000)

IHC-P (1:50-200)

IHC-F (1:50-200)

IF (1:50-200)

Flow-Cyt (1:50-100)

ICC/IF (1:50-200)

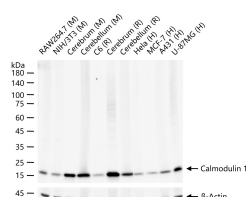
IP (1:20-50)

Reactivity: Human, Mouse, Rat

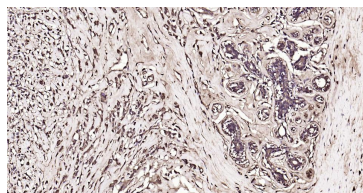
Predicted ¹⁷
MW.:

Subcellular Location: Cytoplasm

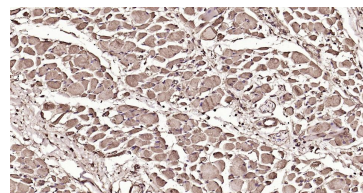
— VALIDATION IMAGES



25 ug total protein per lane of various lysates (see on figure) probed with Calmodulin 1 monoclonal antibody, unconjugated (bsm-61141R) at 1:1000 dilution and 4°C overnight incubation. Followed by conjugated secondary antibody incubation at r.t. for 60 min.



Paraformaldehyde-fixed, paraffin embedded Human Breast Cancer; Antigen retrieval by boiling in sodium citrate buffer (pH6.0) for 15 min; Antibody incubation with Calmodulin 1 Monoclonal Antibody, Unconjugated (bsm-61141R) at 1:200 overnight at 4°C, followed by conjugation to the SP Kit (Rabbit, SP-0023) and DAB (C-0010) staining.



Paraformaldehyde-fixed, paraffin embedded Human Skeletal muscle; Antigen retrieval by boiling in sodium citrate buffer (pH6.0) for 15 min; Antibody incubation with Calmodulin 1 Monoclonal Antibody, Unconjugated (bsm-61141R) at 1:200 overnight at 4°C, followed by conjugation to the SP Kit (Rabbit: SP-0023) and DAB (C-0010) staining.