

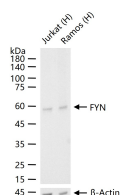
**bsm-61140R****[ Primary Antibody ]****BioSS**  
**ANTIBODIES**

www.bioss.com.cn

sales@bioss.com.cn

techsupport@bioss.com.cn

400-901-9800

**FYN Recombinant Rabbit mAb****— DATASHEET —****Host:** Rabbit**Isotype:** IgG**Clonality:** Recombinant**CloneNo.:** 6E11**GeneID:** 2534**SWISS:** P06241**Target:** FYN**Immunogen:** A synthesized peptide derived from human Fyn: 30-70.**Purification:** affinity purified by Protein A**Storage:** 10mM phosphate buffered saline(pH 7.4) with 150mM sodium chloride, 0.05% BSA, 0.02% Proclin300 and 50% glycerol. Store at 4°C for short term. Store at -20°C for long term. Avoid repeated freeze/thaw cycles.**Background:** Non-receptor tyrosine-protein kinase that plays a role in many biological processes including regulation of cell growth and survival, cell adhesion, integrin-mediated signaling, cytoskeletal remodeling, cell motility, immune response and axon guidance.**Applications:** WB (1:500-2000)**ICC/IF** (1:50-200)**Reactivity:** Human (predicted: Mouse, Rat)**Predicted  
MW.:** 61**Subcellular  
Location:** Cell membrane ,Cytoplasm ,Nucleus**— VALIDATION IMAGES —**

25 ug total protein per lane of various lysates (see on figure) probed with FYN monoclonal antibody, unconjugated (bsm-61140R) at 1:1000 dilution and 4°C overnight incubation. Followed by conjugated secondary antibody incubation at r.t. for 60 min.