

bsm-61137R**[Primary Antibody]**

www.bioss.com.cn

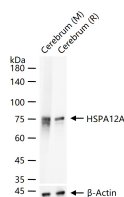
sales@bioss.com.cn

techsupport@bioss.com.cn

400-901-9800

HSPA12A Recombinant Rabbit mAb**— DATASHEET —**

Host: Rabbit	Isotype: IgG	Applications: WB (1:500-2000) IHC-P (1:100-200) IHC-F (1:100-200) IF (1:50-200) ICC/IF (1:50-200) IP (1:20-50) Reactivity: Mouse, Rat (predicted: Human) Predicted MW.: 75 Subcellular Location: Cytoplasm
Clonality: Recombinant	CloneNo.: 7C4	
GeneID: 259217	SWISS: O43301	
Target: HSPA12A		
Immunogen: A synthesized peptide derived from human Hsp70 12A: 104-143.		
Purification: affinity purified by Protein A		
Storage: 10mM phosphate buffered saline(pH 7.4) with 150mM sodium chloride, 0.05% BSA, 0.02% Proclin300 and 50% glycerol. Store at 4°C for short term. Store at -20°C for long term. Avoid repeated freeze/thaw cycles.		
Background: Adapter protein for SORL1, but not SORT1. Delays SORL1 internalization and affects SORL1 subcellular localization.		

— VALIDATION IMAGES —

25 ug total protein per lane of various lysates
(see on figure) probed with HSPA12A
monoclonal antibody, unconjugated
(bsm-61137R) at 1:1000 dilution and 4°C
overnight incubation. Followed by conjugated
secondary antibody incubation at r.t. for 60 min.