

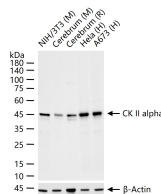
**bsm-61133R****[ Primary Antibody ]****Bioss**  
ANTIBODIES

www.bioss.com.cn

sales@bioss.com.cn

techsupport@bioss.com.cn

400-901-9800

**CK II alpha Recombinant Rabbit mAb****— DATASHEET —****Host:** Rabbit**Isotype:** IgG**Clonality:** Recombinant**CloneNo.:** 8G7**GeneID:** 1457**SWISS:** P68400**Target:** CK II alpha**Immunogen:** A synthesized peptide derived from human CK II alpha: 1-39.**Purification:** affinity purified by Protein A**Storage:** 10mM phosphate buffered saline(pH 7.4) with 150mM sodium chloride, 0.05% BSA, 0.02% Proclin300 and 50% glycerol. Store at 4°C for short term. Store at -20°C for long term. Avoid repeated freeze/thaw cycles.**Background:** Catalytic subunit of a constitutively active serine/threonine-protein kinase complex that phosphorylates a large number of substrates containing acidic residues C-terminal to the phosphorylated serine or threonine. Regulates numerous cellular processes, such as cell cycle progression, apoptosis and transcription, as well as viral infection. May act as a regulatory node which integrates and coordinates numerous signals leading to an appropriate cellular response.**Applications:** WB (1:500-2000)**IHC-P** (1:50-200)**IHC-F** (1:50-200)**IF** (1:50-200)**Flow-Cyt** (1:50-100)**Reactivity:** Human, Mouse, Rat**Predicted  
MW.:** 45**Subcellular  
Location:** Nucleus**— VALIDATION IMAGES —**

25 ug total protein per lane of various lysates  
(see on figure) probed with CK II alpha  
monoclonal antibody, unconjugated  
(bsm-61133R) at 1:1000 dilution and 4°C  
overnight incubation. Followed by conjugated  
secondary antibody incubation at r.t. for 60 min.