

bsm-61131R**[Primary Antibody]****BioSS**
ANTIBODIES

www.bioss.com.cn

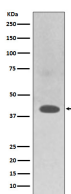
sales@bioss.com.cn

techsupport@bioss.com.cn

400-901-9800

TRAM2 Recombinant Rabbit mAb**— DATASHEET —**

Host: Rabbit	Isotype: IgG	Applications: WB (1:1000-2000)
Clonality: Recombinant		Reactivity: Human, Mouse, Rat
GeneID: 9697	SWISS: Q15035	
Target: TRAM2		
Immunogen: A synthesized peptide derived from human TRAM2: 250-300/370.		Predicted MW.: 43
Purification: affinity purified by Protein A		Subcellular Location: Cell membrane
Storage: 10mM phosphate buffered saline(pH 7.4) with 150mM sodium chloride, 0.05% BSA, 0.02% Proclin300 and 50% glycerol. Store at 4°C for short term. Store at -20°C for long term. Avoid repeated freeze/thaw cycles.		
Background: Necessary for collagen type I synthesis. May couple the activity of the ER Ca ²⁺ pump SERCA2B with the activity of the translocon. This coupling may increase the local Ca ²⁺ concentration at the site of collagen synthesis, and a high Ca ²⁺ concentration may be necessary for the function of molecular chaperones involved in collagen folding. Required for proper insertion of the first transmembrane helix N-terminus of TM4SF20 into the ER lumen, may act as a ceramide sensor for regulated alternative translocation (RAT).		

— VALIDATION IMAGES —

Western blot analysis of HepG2 cell lysate. Using TRAM2 (bsm-61131R) monoclonal antibody at 1:1000 dilution and 4°C overnight incubation. Followed by conjugated secondary antibody incubation at r.t. for 60 min.