

bsm-61130R**[Primary Antibody]****BioSS**
ANTIBODIES

www.bioss.com.cn

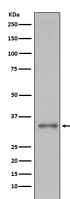
sales@bioss.com.cn

techsupport@bioss.com.cn

400-901-9800

Torsin A Recombinant Rabbit mAb**— DATASHEET —**

Host: Rabbit	Isotype: IgG	Applications: WB (1:1000-2000) Flow-Cyt (1:50-100)
Clonality: Recombinant		Reactivity: Human
GeneID: 1861	SWISS: O14656	
Target: Torsin A		
Immunogen: A synthesized peptide derived from human Torsin 1A: 300-332.		
Purification: affinity purified by Protein A		Predicted MW.: 38
Storage: 10mM phosphate buffered saline(pH 7.4) with 150mM sodium chloride, 0.05% BSA, 0.02% Proclin300 and 50% glycerol. Store at 4°C for short term. Store at -20°C for long term. Avoid repeated freeze/thaw cycles.		Subcellular Location: Cell membrane ,Cytoplasm ,Nucleus
Background: Protein with chaperone functions important for the control of protein folding, processing, stability and localization as well as for the reduction of misfolded protein aggregates.		

— VALIDATION IMAGES —

Western blot analysis of 293T cell lysate. Using Torsin A (bsm-61130R) monoclonal antibody at 1:1000 dilution and 4°C overnight incubation. Followed by conjugated secondary antibody incubation at r.t. for 60 min.