

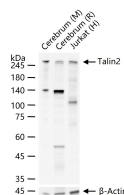
bsm-61129R**[Primary Antibody]****Bioss**
ANTIBODIES

www.bioss.com.cn

sales@bioss.com.cn

techsupport@bioss.com.cn

400-901-9800

Talin2 Recombinant Rabbit mAb**— DATASHEET —****Host:** Rabbit**Isotype:** IgG**Clonality:** Recombinant**CloneNo.:** 3F1**GeneID:** 83660**SWISS:** Q9Y4G6**Target:** Talin2**Immunogen:** A synthesized peptide derived from human Talin 2: 400-456/2542.**Purification:** affinity purified by Protein A**Storage:** 10mM phosphate buffered saline(pH 7.4) with 150mM sodium chloride, 0.05% BSA, 0.02% Proclin300 and 50% glycerol.
Store at 4°C for short term. Store at -20°C for long term. Avoid repeated freeze/thaw cycles.**Background:** As a major component of focal adhesion plaques that links integrin to the actin cytoskeleton, may play an important role in cell adhesion. Recruits PIP5K1C to focal adhesion plaques and strongly activates its kinase activity.**Applications:** WB (1:500-2000)**Reactivity:** Human, Mouse, Rat**Predicted MW.:** 272**— VALIDATION IMAGES —**

25 ug total protein per lane of various lysates
(see on figure) probed with Talin2 monoclonal antibody, unconjugated (bsm-61129R) at 1:1000 dilution and 4°C overnight incubation. Followed by conjugated secondary antibody incubation at r.t. for 60 min.