

**bsm-61127R****[ Primary Antibody ]**

## Complement C9 Recombinant Rabbit mAb

**Bioss**  
ANTIBODIES

www.bioss.com.cn

sales@bioss.com.cn

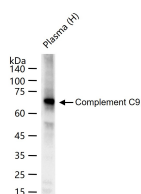
techsupport@bioss.com.cn

400-901-9800

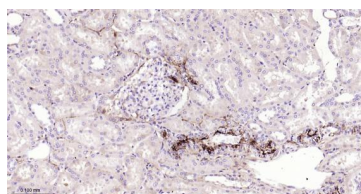
### — DATASHEET —

<b>Host:</b> Rabbit	<b>Isotype:</b> IgG	<b>Applications:</b> <b>WB</b> (1:500-2000) <b>IHC-P</b> (1:50-200) <b>IHC-F</b> (1:50-200) <b>IF</b> (1:50-200) <b>IP</b> (1:20-50)  <b>Reactivity:</b> Human   <b>Predicted MW.:</b> 63  <b>Subcellular Location:</b> Secreted ,Cell membrane
<b>Clonality:</b> Recombinant	<b>CloneNo.:</b> 8H15	
<b>GeneID:</b> 735	<b>SWISS:</b> P02748	
<b>Target:</b> Complement C9		
<b>Immunogen:</b> A synthesized peptide derived from human Complement C9: 1-185/559.		
<b>Purification:</b> affinity purified by Protein A		
<b>Storage:</b> 10mM phosphate buffered saline(pH 7.4) with 150mM sodium chloride, 0.05% BSA, 0.02% Proclin300 and 50% glycerol. Store at 4°C for short term. Store at -20°C for long term. Avoid repeated freeze/thaw cycles.		
<b>Background:</b> Constituent of the membrane attack complex (MAC) that plays a key role in the innate and adaptive immune response by forming pores in the plasma membrane of target cells. C9 is the pore-forming subunit of the MAC.		

### — VALIDATION IMAGES —



25 ug total protein per lane of various lysates (see on figure) probed with Complement C9 monoclonal antibody, unconjugated (bsm-61127R) at 1:1000 dilution and 4°C overnight incubation. Followed by conjugated secondary antibody incubation at r.t. for 60 min.



Paraformaldehyde-fixed, paraffin embedded Human Kidney; Antigen retrieval by boiling in sodium citrate buffer (pH6.0) for 15 min; Antibody incubation with Complement C9 Monoclonal Antibody, Unconjugated(bsm-61127R) at 1:200 overnight at 4°C, followed by conjugation to the bs-0295G-HRP and DAB (C-0010) staining.