

bsm-61108R**[Primary Antibody]****Bioss**
ANTIBODIES

www.bioss.com.cn

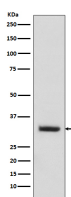
sales@bioss.com.cn

techsupport@bioss.com.cn

400-901-9800

C10orf63 Recombinant Rabbit mAb**— DATASHEET —**

Host: Rabbit	Isotype: IgG	Applications: WB (1:1000-2000)
Clonality: Recombinant		Reactivity: Human, Mouse
GeneID: 219670	SWISS: Q8TC29	
Target: C10orf63		
Immunogen: A synthesized peptide derived from human Enkurin: 1-180/256.		Predicted MW.: 29
Purification: affinity purified by Protein A		Subcellular Location: Nucleus
Storage: 10mM phosphate buffered saline(pH 7.4) with 150mM sodium chloride, 0.05% BSA, 0.02% Proclin300 and 50% glycerol. Store at 4°C for short term. Store at -20°C for long term. Avoid repeated freeze/thaw cycles.		
Background: Adapter that functions to localize a calcium-sensitive signal transduction machinery in sperm to a calcium-permeable ion channel. Microtubule inner protein (MIP) part of the dynein-decorated doublet microtubules (DMTs) in cilia axoneme, which is required for motile cilia beating.		

— VALIDATION IMAGES —

Western blot analysis of Mouse testis lysate.
Using C10orf63 (bsm-61108R) monoclonal antibody at 1:1000 dilution and 4°C overnight incubation. Followed by conjugated secondary antibody incubation at r.t. for 60 min.