

**bsm-61102R****[ Primary Antibody ]****Bioss**  
ANTIBODIES

www.bioss.com.cn

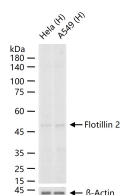
sales@bioss.com.cn

techsupport@bioss.com.cn

400-901-9800

**Flotillin 2 Recombinant Rabbit mAb****— DATASHEET —**

<b>Host:</b> Rabbit	<b>Isotype:</b> IgG	<b>Applications:</b> <b>WB</b> (1:500-2000) <b>IP</b> (1:20-50)
<b>Clonality:</b> Recombinant		
<b>GeneID:</b> 2319	<b>SWISS:</b> Q14254	<b>Reactivity:</b> Human (predicted: Mouse, Rat)
<b>Target:</b> Flotillin 2		
<b>Immunogen:</b> A synthesized peptide derived from human Flotillin 2: 324-366/428.		
<b>Purification:</b> affinity purified by Protein A		<b>Predicted MW.:</b> 47
<b>Storage:</b> 10mM phosphate buffered saline(pH 7.4) with 150mM sodium chloride, 0.05% BSA, 0.02% Proclin300 and 50% glycerol. Store at 4°C for short term. Store at -20°C for long term. Avoid repeated freeze/thaw cycles.		<b>Subcellular Location:</b> Cell membrane
<b>Background:</b> May act as a scaffolding protein within caveolar membranes, functionally participating in formation of caveolae or caveolae-like vesicles. May be involved in epidermal cell adhesion and epidermal structure and function.		

**— VALIDATION IMAGES —**

25 ug total protein per lane of various lysates  
(see on figure) probed with Flotillin 2  
monoclonal antibody, unconjugated  
(bsm-61102R) at 1:1000 dilution and 4°C  
overnight incubation. Followed by conjugated  
secondary antibody incubation at r.t. for 60 min.