

bsm-61098R**[Primary Antibody]**

www.bioss.com.cn

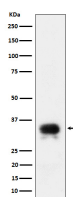
sales@bioss.com.cn

techsupport@bioss.com.cn

400-901-9800

CD24 Recombinant Rabbit mAb**— DATASHEET —**

Host: Rabbit	Isotype: IgG	Applications: WB (1:1000-2000) IP (1:20-50)
Clonality: Recombinant		Reactivity: Human
GeneID: 100133941	SWISS: P25063	
Target: CD24		
Immunogen: A synthesized peptide derived from human CD24: 1-40.		
Purification: affinity purified by Protein A		
Storage: 10mM phosphate buffered saline(pH 7.4) with 150mM sodium chloride, 0.05% BSA, 0.02% Proclin300 and 50% glycerol. Store at 4°C for short term. Store at -20°C for long term. Avoid repeated freeze/thaw cycles.		
Background: May have a pivotal role in cell differentiation of different cell types. Signaling could be triggered by the binding of a lectin-like ligand to the CD24 carbohydrates, and transduced by the release of second messengers derived from the GPI-anchor. Modulates B-cell activation responses. Promotes AG-dependent proliferation of B-cells, and prevents their terminal differentiation into antibody-forming cells.		
		Predicted MW.: 8
		Subcellular Location: Cell membrane

— VALIDATION IMAGES —

Western blot analysis of SH-SY5Y cell lysate.
Using CD24 (bsm-61098R) monoclonal antibody
at 1:1000 dilution and 4°C overnight incubation.
Followed by conjugated secondary antibody
incubation at r.t. for 60 min.