

bsm-61097R**[Primary Antibody]****Bioss**
ANTIBODIES

www.bioss.com.cn

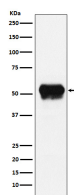
sales@bioss.com.cn

techsupport@bioss.com.cn

400-901-9800

Fibrinogen gamma chain Recombinant Rabbit mAb**— DATASHEET —**

| | | |
|--|----------------------|--|
| Host: Rabbit | Isotype: IgG | Applications: WB (1:1000-2000) Flow-Cyt (1:50-100) |
| Clonality: Recombinant | | Reactivity: Human |
| GeneID: 2266 | SWISS: P02679 | |
| Target: Fibrinogen gamma chain | | |
| Immunogen: A synthesized peptide derived from human Fibrinogen gamma chain: 400-453/453. | | Predicted MW.: 52 |
| Purification: affinity purified by Protein A | | Subcellular Location: Secreted |
| Storage: 10mM phosphate buffered saline(pH 7.4) with 150mM sodium chloride, 0.05% BSA, 0.02% Proclin300 and 50% glycerol. Store at 4°C for short term. Store at -20°C for long term. Avoid repeated freeze/thaw cycles. | | |
| Background: Together with fibrinogen alpha (FGA) and fibrinogen beta (FGB), polymerizes to form an insoluble fibrin matrix. Has a major function in hemostasis as one of the primary components of blood clots. | | |

— VALIDATION IMAGES —

Western blot analysis of Human plasma lysate.
Using Fibrinogen gamma chain (bsm-61097R) monoclonal antibody at 1:1000 dilution and 4°C overnight incubation. Followed by conjugated secondary antibody incubation at r.t. for 60 min.