

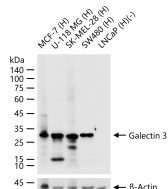
**bsm-61087R****[ Primary Antibody ]****Bioss**  
**ANTIBODIES**

www.bioss.com.cn

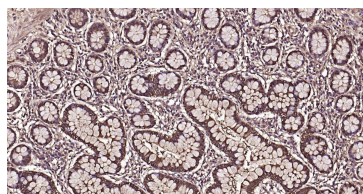
sales@bioss.com.cn

techsupport@bioss.com.cn

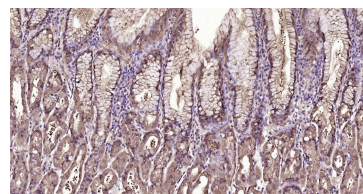
400-901-9800

**Galectin 3 Recombinant Rabbit mAb****DATASHEET****Host:** Rabbit**Clonality:** Recombinant**GeneID:** 3958**Target:** Galectin 3**Immunogen:** A synthesized peptide derived from human Galectin 3: 160-190.**Purification:** affinity purified by Protein A**Storage:** 0.01M TBS(pH7.4) with 1% BSA, 0.02% Proclin300 and 50% Glycerol. Shipped at 4°C. Store at -20 °C for one year. Avoid repeated freeze/thaw cycles.**Background:** This gene encodes a member of the galectin family of carbohydrate binding proteins. Members of this protein family have an affinity for beta-galactosides. The encoded protein is characterized by an N-terminal proline-rich tandem repeat domain and a single C-terminal carbohydrate recognition domain. This protein can self-associate through the N-terminal domain allowing it to bind to multivalent saccharide ligands. This protein localizes to the extracellular matrix, the cytoplasm and the nucleus. This protein plays a role in numerous cellular functions including apoptosis, innate immunity, cell adhesion and T-cell regulation. The protein exhibits antimicrobial activity against bacteria and fungi. Alternate splicing results in multiple transcript variants.[provided by RefSeq, Oct 2014]**Isotype:** IgG**CloneNo.:** 5C5**SWISS:** P17931**Applications:** **WB** (1:500-2000)  
**IHC-P** (1:100-500)  
**IHC-F** (1:100-500)  
**IF** (1:100-500)**Reactivity:** Human**Predicted MW.:** 29 kDa**Subcellular Location:** Secreted ,Cell membrane ,Cytoplasm ,Nucleus**VALIDATION IMAGES**

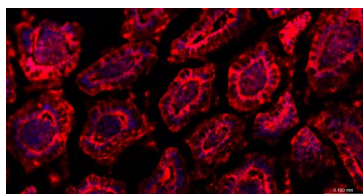
25 ug total protein per lane of various lysates (see on figure) probed with Galectin 3 monoclonal antibody, unconjugated (bsm-61087R) at 1:2000 dilution and 4°C overnight incubation. Followed by conjugated secondary antibody incubation at r.t. for 60 min.



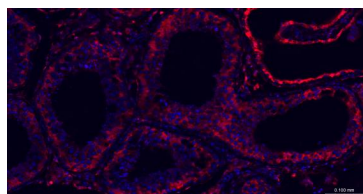
Paraformaldehyde-fixed, paraffin embedded Human Small Intestine; Antigen retrieval by boiling in sodium citrate buffer (pH6.0) for 15 min; Antibody incubation with Galectin 3 Monoclonal Antibody, Unconjugated(bsm-61087R) at 1:200 overnight at 4°C, followed by conjugation to the SP Kit (Rabbit, SP-0023)and DAB (C-0010) staining.



Paraformaldehyde-fixed, paraffin embedded Human Fundus; Antigen retrieval by boiling in sodium citrate buffer (pH6.0) for 15 min; Antibody incubation with Galectin 3 Monoclonal Antibody, Unconjugated(bsm-61087R) at 1:200 overnight at 4°C, followed by conjugation to the SP Kit (Rabbit, SP-0023)and DAB (C-0010) staining.



Paraformaldehyde-fixed, paraffin embedded Human small intestine; Antigen retrieval by boiling in sodium citrate buffer (pH6.0) for 15min; Blocking buffer (normal goat serum) at 37°C for 30min; Incubation with Galectin 3 Monoclonal Antibody, Unconjugated (bsm-61087R) at 1:200 overnight at 4°C, followed by a BF594 conjugated Goat Anti-Rabbit IgG antibody (bs-0295G-BF594) for 90 minutes, and



Paraformaldehyde-fixed, paraffin embedded Human testicles; Antigen retrieval by boiling in sodium citrate buffer (pH6.0) for 15min; Blocking buffer (normal goat serum) at 37°C for 30min; Incubation with Galectin 3 Monoclonal Antibody, Unconjugated (bsm-61087R) at 1:200 overnight at 4°C, followed by a BF594 conjugated Goat Anti-Rabbit IgG antibody (bs-0295G-BF594) for 90 minutes, and DAPI for nuclei staining.

**Important Note:** This product as supplied is intended for research use only, not for use in human, therapeutic or diagnostic applications.

DAPI for nuclei staining.