

**bsm-61095R****[ Primary Antibody ]****IL 7 receptor alpha Recombinant Rabbit mAb****Bioss**  
**ANTIBODIES**

www.bioss.com.cn

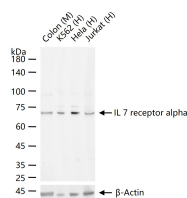
sales@bioss.com.cn

techsupport@bioss.com.cn

400-901-9800

**— DATASHEET —**

<b>Host:</b> Rabbit	<b>Isotype:</b> IgG	<b>Applications:</b> WB (1:500-2000)
<b>Clonality:</b> Recombinant	<b>CloneNo.:</b> 17E3	<b>Reactivity:</b> Human, Mouse (predicted: Rat)
<b>GeneID:</b> 3575	<b>SWISS:</b> P16871	<b>Predicted MW.:</b> 50 kDa
<b>Target:</b> IL 7 receptor alpha		<b>Subcellular Location:</b> Secreted ,Cell membrane
<b>Immunogen:</b> A synthesized peptide derived from human IL 7 receptor alpha: 350-400.		
<b>Purification:</b> affinity purified by Protein A		
<b>Concentration:</b> 1mg/ml		
<b>Storage:</b> 0.01M TBS(pH7.4) with 1% BSA, 0.02% Proclin300 and 50% Glycerol. Shipped at 4°C. Store at -20 °C for one year. Avoid repeated freeze/thaw cycles.		
<b>Background:</b> The protein encoded by this gene is a receptor for interleukine 7 (IL7). The function of this receptor requires the interleukin 2 receptor, gamma chain (IL2RG), which is a common gamma chain shared by the receptors of various cytokines, including interleukine 2, 4, 7, 9, and 15. This protein has been shown to play a critical role in the V(D)J recombination during lymphocyte development. This protein is also found to control the accessibility of the TCR gamma locus by STAT5 and histone acetylation. Knockout studies in mice suggested that blocking apoptosis is an essential function of this protein during differentiation and activation of T lymphocytes. The functional defects in this protein may be associated with the pathogenesis of the severe combined immunodeficiency (SCID).		

**— VALIDATION IMAGES —**

25 ug total protein per lane of various lysates (see on figure) probed with IL 7 receptor alpha monoclonal antibody, unconjugated (bsm-61095R) at 1:1000 dilution and 4°C overnight incubation. Followed by conjugated secondary antibody incubation at r.t. for 60 min.