

TRH/Prothyroliberin Rabbit pAb

Catalog Number: bs-22872R

Target Protein: TRH/Prothyroliberin

Concentration: 1mg/ml

Form: Liquid

Host: Rabbit

Clonality: Polyclonal

Isotype: IgG

Applications: WB (1:500-2000)

Reactivity: Mouse, Rat (predicted:Human, Rabbit, Pig, Dog, Horse)

Predicted MW: 24 kDa

Entrez Gene: 7200

Swiss Prot: P20396

Source: KLH conjugated synthetic peptide derived from human TRH/Prothyroliberin: 131-240/242.

Purification: affinity purified by Protein A

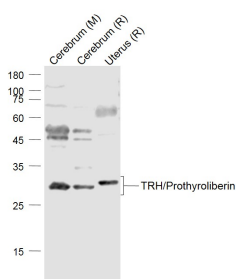
Storage: 0.01M TBS (pH7.4) with 1% BSA, 0.02% Proclin300 and 50% Glycerol.

Shipped at 4°C. Store at -20°C for one year. Avoid repeated freeze/thaw cycles.

Background: Thyrotropin releasing hormone (TRH) is a tripeptide hormone that stimulates the release of thyroid stimulating hormone and prolactin by the anterior pituitary. TRH is produced by the hypothalamus and travels across the median eminence to the pituitary via the hypophyseal portal system. In addition to the brain, TRH can also be detected in other areas of the body including the gastrointestinal system and pancreatic islets.

pGlu-His-Pro Amide, C₁₈H₂₆N₆O₆ L-Pyroglutamyl-L-histidyl-L-prolinamide Molecular Weight:422.44

VALIDATION IMAGES



Sample: Lane 1: Cerebrum (Mouse) Lysate at 40 ug Lane 2: Cerebrum (Rat) Lysate at 40 ug Lane 3: Uterus (Rat) Lysate at 40 ug Primary: Anti-TRH/Prothyroliberin (bs-22872R) at 1/1000 dilution Secondary: IRDye800CW Goat Anti-Rabbit IgG at 1/20000 dilution Predicted band size: 27 kD Observed band size: 27 kD