

## GFP Rabbit pAb

Catalog Number: bs-33009R

Target Protein: GFP

Concentration: 1mg/ml

Form: Liquid

Host: Rabbit

Clonality: Polyclonal

Isotype: IgG

Applications: WB (1:5000-20000)

Reactivity: Species independent, Belt Jellyfish

Predicted MW: 27 kDa

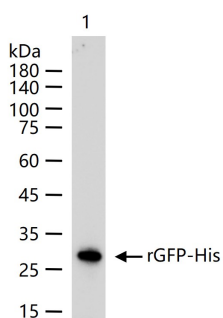
Purification: affinity purified by Protein A

Storage: 0.01M TBS(pH7.4) with 1% BSA, 0.02% Proclin300 and 50% Glycerol.

Shipped at 4°C. Store at -20 °C for one year. Avoid repeated freeze/thaw cycles.

**Background:** Enhanced Blue Fluorescent Protein (EBFP) emits a strong blue fluorescence. EBFP can be used as protein "tags" to study the sub-cellular localization of proteins and/or their translocation upon stimulation or as markers for transfection in transient and stable expression systems.

### VALIDATION IMAGES



50 ng rGFP-His protein (bs-33009P) per lane probed with GFP polyclonal antibody respectively, unconjugated (bs-33009R) at 1:10000 dilution and 4°C overnight incubation. Followed by corresponding conjugated secondary antibody incubation at r.t. for 60 min.