

**bs-18831R****[ Primary Antibody ]****RPS6KC1 Rabbit pAb****Bioss**  
**ANTIBODIES**

www.bioss.com.cn

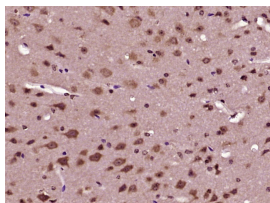
sales@bioss.com.cn

techsupport@bioss.com.cn

400-901-9800

**— DATASHEET —**

<b>Host:</b> Rabbit	<b>Isotype:</b> IgG	<b>Applications:</b> IHC-P (1:100-500) IHC-F (1:100-500) IF (1:100-500)  <b>Reactivity:</b> Mouse (predicted: Human, Rat, Pig, Sheep, Cow, Horse)  <b>Predicted MW.:</b> 119 kDa  <b>Subcellular Location:</b> Cell membrane ,Cytoplasm
<b>Clonality:</b> Polyclonal		
<b>GeneID:</b> 26750	<b>SWISS:</b> Q96S38	
<b>Target:</b> RPS6KC1		
<b>Immunogen:</b> KLH conjugated synthetic peptide derived from human RPS6KC1: 201-300/1066.		
<b>Purification:</b> affinity purified by Protein A		
<b>Concentration:</b> 1mg/ml		
<b>Storage:</b> 0.01M TBS (pH7.4) with 1% BSA, 0.02% Proclin300 and 50% Glycerol. Shipped at 4°C. Store at -20°C for one year. Avoid repeated freeze/thaw cycles.		
<b>Background:</b> p52 S6 kinase, also known as RPS6KC1 (ribosomal protein S6 kinase, 52kDa, polypeptide 1) or RPK118, is a 1,066 amino acid member of the Ser/Thr kinase family that localizes to both the cytoplasm and the nucleus and contains one MIT domain, one PX domain and two protein kinase domains. Expressed at high levels in brain, placenta, heart, testis, kidney, liver and skeletal muscle, p52 S6 kinase catalyzes the ATP-dependent phosphorylation of target proteins and is thought to be involved in transmitting sphingosine-1 phosphate (SPP)-mediated signaling into the cell.		

**— VALIDATION IMAGES —**

Paraformaldehyde-fixed, paraffin embedded (mouse brain tissue); Antigen retrieval by boiling in sodium citrate buffer (pH6.0) for 15min; Block endogenous peroxidase by 3% hydrogen peroxide for 20 minutes; Blocking buffer (normal goat serum) at 37°C for 30min; Antibody incubation with (RPS6KC1) Polyclonal Antibody, Unconjugated (bs-18831R) at 1:400 overnight at 4°C, followed by operating according to SP Kit(Rabbit) (sp-0023) instructions and DAB staining.