

**bsm-61077R****[ Primary Antibody ]****BioSS**  
**ANTIBODIES**

www.bioss.com.cn

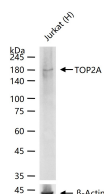
sales@bioss.com.cn

techsupport@bioss.com.cn

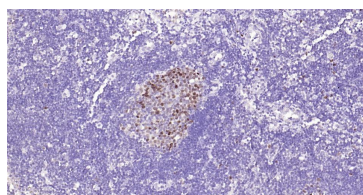
400-901-9800

**TOP2A Recombinant Rabbit mAb****— DATASHEET —**

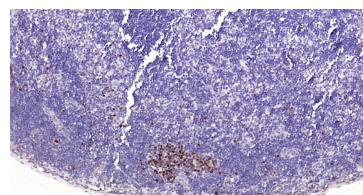
<b>Host:</b> Rabbit	<b>Isotype:</b> IgG	<b>Applications:</b> WB (1:500-2000) <b>IHC-P</b> (1:100-500) <b>IHC-F</b> (1:100-500) <b>IF</b> (1:100-500)  <b>Reactivity:</b> Human, Mouse, Rat  <b>Predicted MW.:</b> 174 kDa  <b>Subcellular Location:</b> Cytoplasm ,Nucleus
<b>Clonality:</b> Recombinant	<b>CloneNo.:</b> 11D3	
<b>GeneID:</b> 7153	<b>SWISS:</b> P11388	
<b>Target:</b> TOP2A		
<b>Immunogen:</b> A synthesized peptide derived from human Topoisomerase 2 alpha: 1500-1531/1531.		
<b>Purification:</b> affinity purified by Protein A		
<b>Concentration:</b> 1mg/ml		
<b>Storage:</b> 0.01M TBS(pH7.4) with 1% BSA, 0.02% Proclin300 and 50% Glycerol. Shipped at 4°C. Store at -20 °C for one year. Avoid repeated freeze/thaw cycles.		
<b>Background:</b> This gene encodes a DNA topoisomerase, an enzyme that controls and alters the topologic states of DNA during transcription. This nuclear enzyme is involved in processes such as chromosome condensation, chromatid separation, and the relief of torsional stress that occurs during DNA transcription and replication. It catalyzes the transient breaking and rejoining of two strands of duplex DNA which allows the strands to pass through one another, thus altering the topology of DNA. Two forms of this enzyme exist as likely products of a gene duplication event. The gene encoding this form, alpha, is localized to chromosome 17 and the beta gene is localized to chromosome 3. The gene encoding this enzyme functions as the target for several anticancer agents and a variety of mutations in this gene have been associated with the development of drug resistance. Reduced activity of this enzyme may also play a role in ataxia-telangiectasia. [provided by RefSeq, Jul 2010]		

**— VALIDATION IMAGES —**

25 µg total protein per lane of various lysates (see on figure) probed with TOP2A monoclonal antibody, unconjugated (bsm-61077R) at 1:1000 dilution and 4°C overnight incubation. Followed by conjugated secondary antibody incubation at r.t. for 60 min.



Paraformaldehyde-fixed, paraffin embedded Rat Lymph; Antigen retrieval by boiling in sodium citrate buffer (pH6.0) for 15 min; Antibody incubation with TOP2A Monoclonal Antibody, Unconjugated(bsm-61077R) at 1:400 overnight at 4°C, followed by conjugation to the SP Kit (Rabbit, SP-0023) and DAB (C-0010) staining.



Paraformaldehyde-fixed, paraffin embedded Mouse Lymph; Antigen retrieval by boiling in sodium citrate buffer (pH6.0) for 15 min; Antibody incubation with TOP2A Monoclonal Antibody, Unconjugated(bsm-61077R) at 1:400 overnight at 4°C, followed by conjugation to the SP Kit (Rabbit, SP-0023) and DAB (C-0010) staining.