

**bsm-61075R****[ Primary Antibody ]****BioSS**  
ANTIBODIES

www.bioss.com.cn

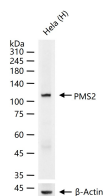
sales@bioss.com.cn

techsupport@bioss.com.cn

400-901-9800

**PMS2 Recombinant Rabbit mAb****— DATASHEET —**

<b>Host:</b> Rabbit	<b>Isotype:</b> IgG	<b>Applications:</b> WB (1:500-2000)  <b>Reactivity:</b> Human  <b>Predicted MW.:</b> 103 kDa  <b>Subcellular Location:</b> Nucleus
<b>Clonality:</b> Recombinant	<b>CloneNo.:</b> 6G9	
<b>GeneID:</b> 5395	<b>SWISS:</b> P54278	
<b>Target:</b> PMS2		
<b>Immunogen:</b> A synthesized peptide derived from human PMS2: 1-38.		
<b>Purification:</b> affinity purified by Protein A		
<b>Concentration:</b> 1mg/ml		
<b>Storage:</b> 0.01M TBS(pH7.4) with 1% BSA, 0.02% Proclin300 and 50% Glycerol. Shipped at 4°C. Store at -20 °C for one year. Avoid repeated freeze/thaw cycles.		
<b>Background:</b> This gene is one of the PMS2 gene family members found in clusters on chromosome 7. The product of this gene is involved in DNA mismatch repair. It forms a heterodimer with MLH1 and this complex interacts with other complexes bound to mismatched bases. Mutations in this gene are associated with hereditary nonpolyposis colorectal cancer, Turcot syndrome, and are a cause of supratentorial primitive neuroectodermal tumors. Alternatively spliced transcript variants have been observed for this gene. [provided by RefSeq, Jul 2008].		

**— VALIDATION IMAGES —**

25 ug total protein per lane of various lysates (see on figure) probed with PMS2 monoclonal antibody, unconjugated (bsm-61075R) at 1:1000 dilution and 4°C overnight incubation. Followed by conjugated secondary antibody incubation at r.t. for 60 min.