

**bs-3092R****[ Primary Antibody ]****phospho-CDK1 (Tyr15) Rabbit pAb****Bioss**  
**ANTIBODIES**

www.bioss.com.cn

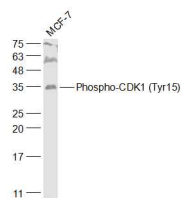
sales@bioss.com.cn

techsupport@bioss.com.cn

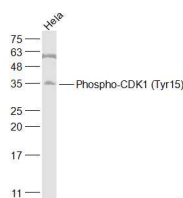
400-901-9800

**— DATASHEET —****Host:** Rabbit**Isotype:** IgG**Clonality:** Polyclonal**GeneID:** 983**SWISS:** P06493**Target:** CDK1 (Tyr15)**Immunogen:** KLH conjugated Synthesised phosphopeptide derived from human cdc2 around the phosphorylation site of Tyr15: GT(p-Y)GV.**Purification:** affinity purified by Protein A**Concentration:** 1mg/ml**Storage:** 0.01M TBS (pH7.4) with 1% BSA, 0.02% Proclin300 and 50% Glycerol.

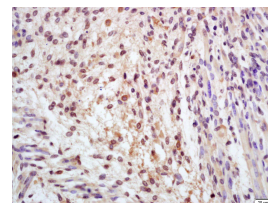
Shipped at 4°C. Store at -20°C for one year. Avoid repeated freeze/thaw cycles.

**Background:** The protein encoded by this gene is a member of the Ser/Thr protein kinase family. This protein is a catalytic subunit of the highly conserved protein kinase complex known as M-phase promoting factor (MPF), which is essential for G1/S and G2/M phase transitions of eukaryotic cell cycle. Mitotic cyclins stably associate with this protein and function as regulatory subunits. The kinase activity of this protein is controlled by cyclin accumulation and destruction through the cell cycle. The phosphorylation and dephosphorylation of this protein also play important regulatory roles in cell cycle control. Alternatively spliced transcript variants encoding different isoforms have been found for this gene. [provided by RefSeq, Mar 2009]**Applications:** WB (1:500-2000)**IHC-P** (1:100-500)**IHC-F** (1:100-500)**IF** (1:100-500)**Reactivity:** Human, Mouse  
(predicted: Rat, Rabbit)**Predicted  
MW.:** 34 kDa**Subcellular  
Location:** Cytoplasm ,Nucleus**— VALIDATION IMAGES —**

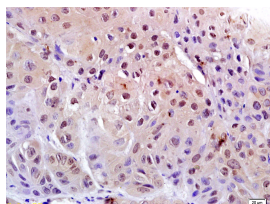
Sample: MCF-7(Human) Cell Lysate at 30 ug  
 Primary: Anti-Phospho-CDK1 (Tyr15) (bs-3092R)  
 at 1/1000 dilution Secondary: IRDye800CW Goat  
 Anti-Rabbit IgG at 1/20000 dilution Predicted  
 band size: 34 kD Observed band size: 35 kD



Sample: HeLa(Human) Cell Lysate at 30 ug  
 Primary: Anti-Phospho-CDK1 (Tyr15) (bs-3092R)  
 at 1/1000 dilution Secondary: IRDye800CW Goat  
 Anti-Rabbit IgG at 1/20000 dilution Predicted  
 band size: 34 kD Observed band size: 35 kD



Tissue/cell: mouse embryo tissue; 4%  
 Paraformaldehyde-fixed and paraffin-  
 embedded; Antigen retrieval: citrate buffer (0.01M, pH 6.0), Boiling bathing for 15min; Block  
 endogenous peroxidase by 3% Hydrogen  
 peroxide for 30min; Blocking buffer (normal goat  
 serum, C-0005) at 37°C for 20 min; Incubation:  
 Anti-Phospho-cdc2(Tyr15) Polyclonal Antibody,  
 Unconjugated(bs-3092R) 1:200, overnight at 4°C,  
 followed by conjugation to the secondary  
 antibody(SP-0023) and DAB(C-0010) staining



Tissue/cell: human laryngocarcinoma; 4%  
 Paraformaldehyde-fixed and paraffin-

Important Note: This product as supplied is intended for research use only, not for use in human, therapeutic or diagnostic applications.

embedded; Antigen retrieval: citrate buffer (0.01M, pH 6.0 ), Boiling bathing for 15min; Block endogenous peroxidase by 3% Hydrogen peroxide for 30min; Blocking buffer (normal goat serum,C-0005) at 37°C for 20 min; Incubation: Anti-Phospho-cdc2(Tyr15) Polyclonal Antibody, Unconjugated(bs-3092R) 1:200, overnight at 4°C, followed by conjugation to the secondary antibody(SP-0023) and DAB(C-0010) staining

---

## — SELECTED CITATIONS —

- **[IF=3.8]** Cuicui Zhuang. et al. Escherichia coli infection mediates pyroptosis via activating p53-p21 pathway-regulated apoptosis and cell cycle arrest in bovine mammary epithelial cells. MICROB PATHOGENESIS. 2023 Sep;;106338 WB ;Bovine. 37683833