

bs-8520R**[Primary Antibody]****MtTF1/TFAM Rabbit pAb****Bioss**
ANTIBODIES

www.bioss.com.cn

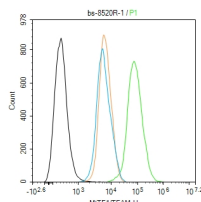
sales@bioss.com.cn

techsupport@bioss.com.cn

400-901-9800

DATASHEET

Host: Rabbit Clonality: Polyclonal GeneID: 7019 Target: MtTF1/TFAM Immunogen: KLH conjugated synthetic peptide derived from human MtTF1: 155-246/246. Purification: affinity purified by Protein A Concentration: 1mg/ml Storage: 0.01M TBS (pH7.4) with 1% BSA, 0.02% Proclin300 and 50% Glycerol. Shipped at 4°C. Store at -20°C for one year. Avoid repeated freeze/thaw cycles. Background: Binds to the mitochondrial light strand promoter and functions in mitochondrial transcription regulation. Required for accurate and efficient promoter recognition by the mitochondrial RNA polymerase. Promotes transcription initiation from the HSP1 and the light strand promoter by binding immediately upstream of transcriptional start sites. Is able to unwind and bend DNA. Required for maintenance of normal levels of mitochondrial DNA. May play a role in organizing and compacting mitochondrial DNA. target DNA. Interacts with TFB1M and TFB2M.	Isotype: IgG SWISS: Q00059	Applications: Flow-Cyt (1ug/Test) Reactivity: Human (predicted: Mouse, Rat) Predicted MW.: 29 kDa Subcellular Location: Cytoplasm
---	---	--

VALIDATION IMAGES

Blank control (black line) :Hela. Primary Antibody (green line): Rabbit Anti-MtTF1/TFAM antibody (bs-8520R) Dilution:1ug/Test; Secondary Antibody (white blue line) : Goat anti-rabbit IgG-AF488 Dilution: 0.5ug/Test. Isotype control (orange line) : Normal Rabbit IgG Protocol The cells were fixed with 4% PFA (10min at room temperature)and then permeabilized with 90% ice-cold methanol for 20 min at -20°C, The cells were then incubated in 5%BSA to block non-specific protein-protein interactions for 30 min at room temperature .Cells stained with Primary Antibody for 30 min at room temperature. The secondary antibody used for 40 min at room temperature. Acquisition of 20,000 events was performed.

SELECTED CITATIONS

- **[IF=4.966]** Guangning Kou. et al. Nobiletin activates thermogenesis of brown and white adipose tissue in high - fat diet - fed C57BL/6 mice by shaping the gut microbiota. Faseb J. 2021 Feb;35(2):e21267 WB ;Mouse. 33475201
- **[IF=3.95]** Yan, Wei, et al. "Acute nitrogen dioxide inhalation induces mitochondrial dysfunction in rat brain."

Important Note: This product as supplied is intended for research use only, not for use in human, therapeutic or diagnostic applications.

- Environmental Research 138 (2015): 416-424. WB ;Rat. 25791864
- **[IF=3.974]** Ning X et al.Ambient PM2. 5 causes lung injuries and coupled energy metabolic disorder. (2018) Ecotoxicol. Environ. Saf. 170 WB ;Mouse. 30579162
 - **[IF=2.84]** You, Yan, et al. "Protective Effects of PGC-1 α via the Mitochondrial Pathway in Rat Brains after Intracerebral Hemorrhage." Brain Research(2016). WB ;Rat. 27178364
 - **[IF=2.566]** Bryant JL et al. Glomerular mitochondrial changes in HIV associated renal injury.Exp Mol Pathol. 2018 Jun;104(3):175-189. IHC,WB ;Mouse. 29608912