

bs-1128R**[Primary Antibody]****Bioss**
ANTIBODIES

www.bioss.com.cn

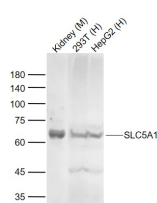
sales@bioss.com.cn

techsupport@bioss.com.cn

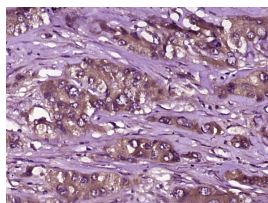
400-901-9800

SLC5A1 Rabbit pAb**DATASHEET**

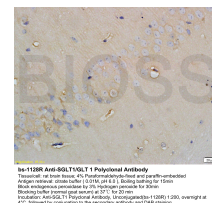
Host: Rabbit	Isotype: IgG	Applications: WB (1:500-2000) IHC-P (1:100-500) IHC-F (1:100-500) IF (1:100-500) ELISA (1:5000-10000) Reactivity: Human, Mouse, Rat Predicted MW.: 73 kDa Subcellular Location: Extracellular matrix
Clonality: Polyclonal		
GeneID: 6523	SWISS: P13866	
Target: SLC5A1		
Immunogen: KLH conjugated synthetic peptide derived from human SGLT1: 501-600/665.		
Purification: affinity purified by Protein A		
Concentration: 1mg/ml		
Storage: 0.01M TBS (pH7.4) with 1% BSA, 0.02% Proclin300 and 50% Glycerol. Shipped at 4°C. Store at -20°C for one year. Avoid repeated freeze/thaw cycles.		
Background: This gene encodes a member of the sodium-dependent glucose transporter (SGLT) family. The encoded integral membrane protein is the primary mediator of dietary glucose and galactose uptake from the intestinal lumen. Mutations in this gene have been associated with glucose-galactose malabsorption. Multiple transcript variants encoding different isoforms have been found for this gene. [provided by RefSeq, Jan 2012]		

VALIDATION IMAGES

Sample: Lane 1: Mouse Kidney Lysates Lane 2: Human 293T cell Lysates Lane 3: Human HepG2 cell Lysates Primary: Anti-SLC5A1 (bs-1128R) at 1/1000 dilution Secondary: IRDye800CW Goat Anti-Rabbit IgG at 1/20000 dilution Predicted band size: 73kDa Observed band size: 70kDa



Paraformaldehyde-fixed, paraffin embedded (human liver carcinoma); Antigen retrieval by boiling in sodium citrate buffer (pH6.0) for 15min; Block endogenous peroxidase by 3% hydrogen peroxide for 20 minutes; Blocking buffer (normal goat serum) at 37°C for 30min; Antibody incubation with (SGLT1) Polyclonal Antibody, Unconjugated (bs-1128R) at 1:400 overnight at 4°C, followed by operating according to SP Kit(Rabbit) (sp-0023) instructions and DAB staining.



Tissue/cell: rat brain tissue; 4% Paraformaldehyde-fixed and paraffin-embedded Antigen retrieval: citrate buffer (0.01M, pH 6.0), Boiling bathing for 15min Block endogenous peroxidase by 3% Hydrogen peroxide for 30min Blocking buffer (normal goat serum) at 37°C for 20 min Incubation: Anti-SGLT1 Polyclonal Antibody, Unconjugated(bs-1128R) 1:200, overnight at 4°C, followed by conjugation to the secondary antibody and DAB staining

SELECTED CITATIONS

- **[IF=17.1]** Lei Liu. et al. Myricetin Oligomer Triggers Multi-Receptor Mediated Penetration and Autophagic Restoration of Blood-Brain Barrier for Ischemic Stroke Treatment. ACS NANO. 2024;XXXX(XXX):XXX-XXX WB ;Mouse. 38533773
- **[IF=9.2]** Zhou Xihong. et al. Colonic phosphocholine is correlated with Candida tropicalis and promotes diarrhea and pathogen clearance. NPJ BIOFILMS MICROBI. 2023 Sep;9(1):1-13 WB ;Pig. 37666845
- **[IF=5.846]** Gai-feng Hu. et al. SGLT1/2 as the potential biomarkers of renal damage under Apoe—/— and chronic stress via the BP neural network model and support vector machine. FRONT CARDIOVASC MED. 2022; 9: 948909 IF ;Mouse. 36035950
- **[IF=5.561]** Yang Liu. et al. Methylation, Hydroxylation, Glycosylation and Acylation Affect the Transport of Wine

Important Note: This product as supplied is intended for research use only, not for use in human, therapeutic or diagnostic applications.

Anthocyanins in Caco-2 Cells. FOODS. 2022 Jan;11(23):3793 WB ;Human. 36496602

- **[IF=5.318]** Yaoyao Liu. et al. Cinnamon free phenolic extract regulates glucose absorption in intestinal cells by inhibiting glucose transporters. FOOD BIOSCI. 2023 Apr;52:102405 WB ;Human. 10.1016/j.fbio.2023.102405