

**bs-1121R****[ Primary Antibody ]****Sema3A Rabbit pAb****BioSS**  
**ANTIBODIES**

www.bioss.com.cn

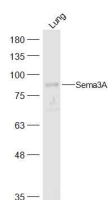
sales@bioss.com.cn

techsupport@bioss.com.cn

400-901-9800

**— DATASHEET —**

<b>Host:</b> Rabbit <b>Clonality:</b> Polyclonal <b>GeneID:</b> 20346 <b>Target:</b> Sema3A <b>Immunogen:</b> KLH conjugated synthetic peptide derived from mouse Sema3A: 22-120/772. <b>Purification:</b> affinity purified by Protein A <b>Concentration:</b> 1mg/ml <b>Storage:</b> 0.01M TBS (pH7.4) with 1% BSA, 0.02% Proclin300 and 50% Glycerol. Shipped at 4°C. Store at -20°C for one year. Avoid repeated freeze/thaw cycles. <b>Background:</b> This gene is a member of the semaphorin family and encodes a protein with an Ig-like C2-type (immunoglobulin-like) domain, a PSI domain and a Sema domain. This secreted protein can function as either a chemorepulsive agent, inhibiting axonal outgrowth, or as a chemoattractive agent, stimulating the growth of apical dendrites. In both cases, the protein is vital for normal neuronal pattern development. Increased expression of this protein is associated with schizophrenia and is seen in a variety of human tumor cell lines. Also, aberrant release of this protein is associated with the progression of Alzheimer's disease.	<b>Isotype:</b> IgG <b>SWISS:</b> O08665	<b>Applications:</b> WB (1:500-2000) <b>Reactivity:</b> Mouse (predicted: Human, Rat, Rabbit, Pig, Sheep, Chicken, Dog, Horse) <b>Predicted MW.:</b> 86 kDa <b>Subcellular Location:</b> Secreted
---	---	--

**— VALIDATION IMAGES —**

Sample: Lung (Mouse) Lysate at 40 ug Primary:  
Anti-Sema3A (bs-1121R) at 1/500 dilution  
Secondary: IRDye800CW Goat Anti-Rabbit IgG at  
1/20000 dilution Predicted band size: 86 kD  
Observed band size: 86 kD

**— SELECTED CITATIONS —**

- **[IF=2.571]** Satoru Shindo. et al. Semaphorin3A released from human dental pulp cells inhibits the increase in interleukin - 6 and CXC chemokine ligand 10 production induced by tumor necrosis factor -  $\alpha$  through suppression of nuclear factor -  $\kappa$ B activation. Cell Biol Int. 2021 Jan;45(1):238-244 IHC ;Human. 32926524
- **[IF=2.8]** Bao Qiufang. et al. Identification of immune-related cervical cancer prognostic biomarkers and construction of prognostic model based on tumor microenvironment. EUR J MED RES. 2025 Dec;30(1):1-18 IHC ;Human. 40205481
- **[IF=1.96]** Ni, Qianwei, et al. "The neuropilins and their ligands in hematogenous metastasis from salivary adenoid cystic carcinoma-an immunohistochemical study." Journal of Oral and Maxillofacial Surgery (2017). IHC ;Human. 28961428
- **[IF=0.83]** Zhang, Meng, et al. "Influence of Mechanical Force on Bone Matrix Proteins in Ovariectomised Mice and Osteoblast-like MC3T3-E1 Cells." In Vivo 31.1 (2017): 87-95. IHC ;Mouse. 28064225

Important Note: This product as supplied is intended for research use only, not for use in human, therapeutic or diagnostic applications.