

bs-18823R

[Primary Antibody]

MFAP3 Rabbit pAb

Bioss
ANTIBODIES

www.bioss.com.cn

sales@bioss.com.cn

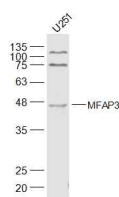
techsupport@bioss.com.cn

400-901-9800

— DATASHEET —

Host: Rabbit	Isotype: IgG	Applications: WB (1:500-2000)
Clonality: Polyclonal		
GeneID: 4238	SWISS: P55082	
Target: MFAP3		
Immunogen: KLH conjugated synthetic peptide derived from human MFAP3: 51-150/362.		
Purification: affinity purified by Protein A		
Concentration: 1mg/ml		
Storage: 0.01M TBS (pH7.4) with 1% BSA, 0.02% Proclin300 and 50% Glycerol. Shipped at 4°C. Store at -20°C for one year. Avoid repeated freeze/thaw cycles.		
		Reactivity: Human, Rabbit (predicted: Mouse, Rat, Cow)
		Predicted MW.: 40 kDa
		Subcellular Location: Cell membrane

— VALIDATION IMAGES —



Sample: U251(Human) Cell Lysate at 30 ug
Primary: Anti-MFAP3 (bs-18823R) at 1/500 dilution
Secondary: IRDye800CW Goat Anti-Rabbit IgG at 1/20000 dilution
Predicted band size: 40 kD
Observed band size: 45 kD