

bsm-34258M**[Primary Antibody]****PAPPA Mouse mAb****BioSS**
ANTIBODIES

www.bioss.com.cn

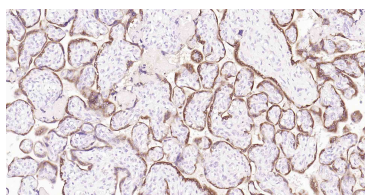
sales@bioss.com.cn

techsupport@bioss.com.cn

400-901-9800

— DATASHEET —

Host: Mouse	Isotype: IgG1, k	Applications: IHC-P (1:100-1:200) IHC-F (1:100-1:200) IF (1:100-1:200) ELISA (1:30-3000) Reactivity: Human (predicted: Mouse, Rat) Predicted MW.: 170 kDa Subcellular Location: Secreted
Clonality: Monoclonal	CloneNo.: 2H5	
GeneID: 5069	SWISS: Q13219	
Target: PAPPA		
Purification: affinity purified by Protein A		
Concentration: 1mg/ml		
Storage: 0.01M TBS(pH7.4) with 1% BSA, 0.02% Proclin300 and 50% Glycerol. Shipped at 4°C. Store at -20 °C for one year. Avoid repeated freeze/thaw cycles.		
Background: Metalloproteinase which specifically cleaves IGFBP-4 and IGFBP-5, resulting in release of bound IGF. Cleavage of IGFBP-4 is dramatically enhanced by the presence of IGF, whereas cleavage of IGFBP-5 is slightly inhibited by the presence of IGF.		

— VALIDATION IMAGES —

Paraformaldehyde-fixed, paraffin embedded Human Placenta; Antigen retrieval by boiling in sodium citrate buffer (pH6.0) for 15 min; Antibody incubation with PAPPA Monoclonal Antibody, Unconjugated(bsm-34258M) at 1:200 overnight at 4°C, followed by conjugation to the SP Kit(Mouse, sp-0024) and DAB (C-0010) staining.