

Leptin Rabbit pAb

Catalog Number: bs-10888R

Target Protein: Leptin

Concentration: 1mg/ml

Form: Liquid

Host: Rabbit

Clonality: Polyclonal

Isotype: IgG

Applications: WB (1:500-2000)

Reactivity: Human (predicted:Mouse, Rat)

Predicted MW: 16 kDa

Entrez Gene: 3952

Swiss Prot: P41159

Source: Recombinant human Leptin: 22-167/167.

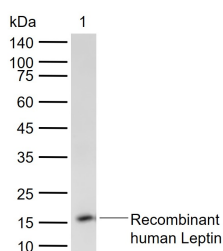
Purification: affinity purified by Protein A

Storage: 0.01M TBS (pH7.4) with 1% BSA, 0.02% Proclin300 and 50% Glycerol.

Shipped at 4°C. Store at -20°C for one year. Avoid repeated freeze/thaw cycles.

Background: Leptin, the product of the ob (obese) gene, is a 16kD protein consisting of 146 amino acid residues. Leptin is produced in the adipose tissue, and is considered to play an important role in appetite control, fat metabolism and regulation of body weight. It targets the central nervous system, particularly hypothalamus, affecting food intake. Leptin levels are high in most obese individuals. Studies have shown that it may also influence reproductive function.

VALIDATION IMAGES



Sample: Lane 1: Recombinant human Leptin, C-His(bs-10888P) Primary: Anti-Leptin (bs-10888R) at 1/1000 dilution Secondary: IRDye800CW Goat Anti-Rabbit IgG at 1/20000 dilution Predicted band size: 16 kDa
Observed band size: 16 kDa