

bsm-41802M**[Primary Antibody]****Tau-4 Mouse mAb****BioSS**
ANTIBODIES

www.bioss.com.cn

sales@bioss.com.cn

techsupport@bioss.com.cn

400-901-9800

— DATASHEET —**Host:** Mouse**Isotype:** IgG1**Clonality:** Monoclonal**CloneNo.:** 3E2**GeneID:** 4137**SWISS:** P10636**Target:** Tau-4**Immunogen:** Recombinant human Tau-4 protein: 1-441/441.**Purification:** affinity purified by Protein A**Concentration:** 1mg/ml**Storage:** Size : 50ul/100ul/200ul

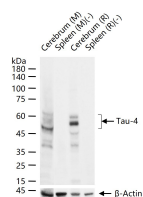
0.01M TBS(pH7.4) with 1% BSA, 0.02% Proclin300 and 50% Glycerol.

Size : 200ug (PBS only)

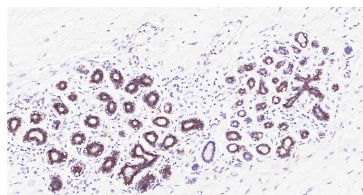
0.01M PBS

Shipped at 4°C. Store at -20 °C for one year. Avoid repeated freeze/thaw cycles.

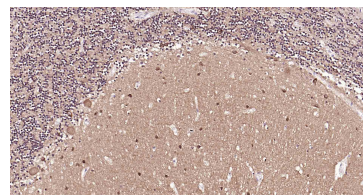
Background: Tau proteins are important Promotes microtubule assembly and stability, and might be involved in the establishment and maintenance of neuronal polarity. The C-terminus binds axonal microtubules while the N-terminus binds neural plasma membrane components, suggesting that tau functions as a linker protein between both. Axonal polarity is predetermined by tau localization (in the neuronal cell) in the domain of the cell body defined by the centrosome. The short isoforms allow plasticity of the cytoskeleton whereas the longer isoforms may preferentially play a role in its stabilization. Tau proteins subcellular located in the axons of neurons, in the cytosol and in association with plasma membrane components. It expressed in neurons. PNS-tau is expressed in the peripheral nervous system while the others are expressed in the central nervous system.

Applications: WB (1:500-2000)**IHC-P** (1:200-500)**IHC-F** (1:200-500)**IF** (1:200-500)**Reactivity:** Human, Mouse, Rat**Predicted****MW.:** 46/79 kDa**Subcellular****Location:** Cell membrane ,Cytoplasm**— VALIDATION IMAGES —**

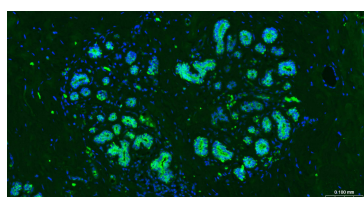
25 ug total protein per lane of various lysates (see on figure) probed with Tau-4 monoclonal antibody, unconjugated (bsm-41802M) at 1:1000 dilution and 4°C overnight incubation. Followed by conjugated secondary antibody incubation at r.t. for 60 min.



Paraformaldehyde-fixed, paraffin embedded Human Breast ; Antigen retrieval by boiling in sodium citrate buffer (pH6.0) for 15 min; Antibody incubation with Tau-4 Monoclonal Antibody, Unconjugated(bsm-41802M) at 1:200overnight at 4°C, followed by conjugation to the SP Kit (Mouse, sp-0024) and DAB (C-0010) staining.



Paraformaldehyde-fixed, paraffin embedded Human Cerebellum; Antigen retrieval by boiling in sodium citrate buffer (pH6.0) for 15 min; Antibody incubation with Tau-4 Monoclonal Antibody, Unconjugated(bsm-41802M) at 1:200overnight at 4°C, followed by conjugation to the SP Kit (Mouse, sp-0024) and DAB (C-0010) staining.



Paraformaldehyde-fixed, paraffin embedded Human Breast; Antigen retrieval by boiling in

Important Note: This product as supplied is intended for research use only, not for use in human, therapeutic or diagnostic applications.

sodium citrate buffer (pH6.0) for 15 min;
Antibody incubation with Tau-4 Monoclonal
Antibody, Unconjugated (bsm-41802M) at 1:200
overnight at 4°C. Followed by conjugated Goat
Anti-Mouse IgG antibody (green, bs-0296G-
BF488), DAPI (blue, C02-04002) was used to stain
the cell nuclei.