

**bsm-42005R****[ Primary Antibody ]**

## Alpha-synuclein Recombinant Rabbit mAb

**Bioss**  
ANTIBODIES

www.bioss.com.cn

sales@bioss.com.cn

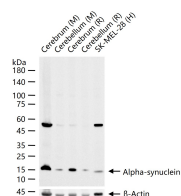
techsupport@bioss.com.cn

400-901-9800

### — DATASHEET —

|   |                      |  |
|---|----------------------|--|
| <b>Host:</b> Rabbit   | <b>Isotype:</b> IgG  | <b>Applications:</b> WB (1:500-2000)<br><br><b>Reactivity:</b> Human, Mouse, Rat<br><br><b>Predicted MW.:</b> 14 kDa<br><br><b>Subcellular Location:</b> Cell membrane ,Cytoplasm ,Nucleus |
| <b>Clonality:</b> Recombinant   | <b>CloneNo.:</b> 2E8 |  |
| <b>GeneID:</b> 6622   | <b>SWISS:</b> P37840 |  |
| <b>Target:</b> Alpha-synuclein  |                      |  |
| <b>Purification:</b> affinity purified by Protein A   |                      |  |
| <b>Concentration:</b> 1mg/ml  |                      |  |
| <b>Storage:</b> 0.01M TBS(pH7.4) with 1% BSA, 0.02% Proclin300 and 50% Glycerol.<br>Shipped at 4°C. Store at -20 °C for one year. Avoid repeated freeze/thaw cycles.  |                      |  |
| <b>Background:</b> Alpha-synuclein is a member of the synuclein family, which also includes beta- and gamma-synuclein. Synucleins are abundantly expressed in the brain and alpha- and beta-synuclein inhibit phospholipase D2 selectively. SNCA may serve to integrate presynaptic signaling and membrane trafficking. Defects in SNCA have been implicated in the pathogenesis of Parkinson disease. SNCA peptides are a major component of amyloid plaques in the brains of patients with Alzheimer's disease. Alternatively spliced transcripts encoding different isoforms have been identified for this gene. [provided by RefSeq, Feb 2016]. |                      |  |

### — VALIDATION IMAGES —



25 ug total protein per lane of various lysates (see on figure) probed with Alpha-synuclein monoclonal antibody, unconjugated (bsm-42005R) at 1:1000 dilution and 4°C overnight incubation. Followed by conjugated secondary antibody incubation at r.t. for 60 min.