
CD56 Mouse mAb

Catalog Number: bsm-51499M

Target Protein: CD56

Concentration: 1mg/ml

Form: Liquid

Host: Mouse

Clonality: Monoclonal

Clone No.: C23F6

Isotype: IgG1

Applications: WB (1:500-2000)

Reactivity: Human, Mouse, Rat

Predicted MW: 92 kDa

Entrez Gene: 4684

Swiss Prot: P13591

Source: KLH conjugated synthetic peptide derived from human NCAM1.: 830-858/858.

Purification: affinity purified by Protein G

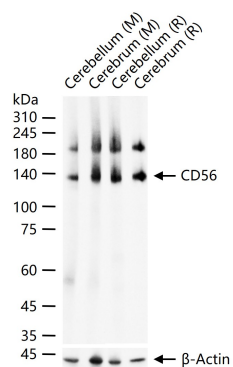
Storage: 0.01M TBS (pH7.4) with 1% BSA, 0.02% Proclin300 and 50% Glycerol.

Shipped at 4°C. Store at -20°C for one year. Avoid repeated freeze/thaw cycles.

Background: This gene encodes a cell adhesion protein which is a member of the immunoglobulin superfamily. The encoded protein is involved in cell-to-cell interactions as well as cell-matrix interactions during development and differentiation. The encoded protein has been shown to be involved in development of the nervous system, and for cells involved in the expansion of T cells and dendritic cells which play an important role in immune surveillance.

Alternative splicing results in multiple transcript variants. [provided by RefSeq, Jun 2011]

VALIDATION IMAGES



25 ug total protein per lane of various lysates (see on figure) probed with CD56 monoclonal antibody, unconjugated (bsm-51499M) at 1:600 dilution and 4°C overnight incubation. Followed by conjugated secondary antibody incubation at r.t. for 60 min.