

STARD8 Rabbit pAb

Catalog Number: bs-6159R

Target Protein: STARD8

Concentration: 1mg/ml

Form: Liquid

Host: Rabbit

Clonality: Polyclonal

Isotype: IgG

Applications: WB (1:500-2000)

Reactivity: Human (predicted: Mouse, Rat, Pig, Cow, Chicken, Dog, Horse)

Predicted MW: 113 kDa

Entrez Gene: 9754

Swiss Prot: Q92502

Source: KLH conjugated synthetic peptide derived from human STARD8: 561-660/1023.

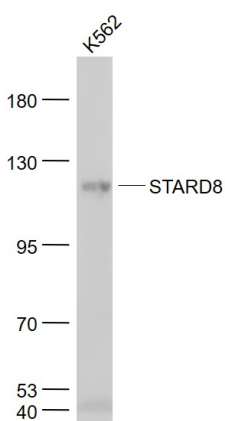
Purification: affinity purified by Protein A

Storage: 0.01M TBS (pH7.4) with 1% BSA, 0.02% Proclin300 and 50% Glycerol.

Shipped at 4°C. Store at -20°C for one year. Avoid repeated freeze/thaw cycles.

Background: This gene encodes a member of a subfamily of Rho GTPase activating proteins that contain a steroidogenic acute regulatory protein related lipid transfer domain. The encoded protein localizes to focal adhesions and may be involved in regulating cell morphology. This protein may also function as a tumor suppressor.

VALIDATION IMAGES



Sample: K562(Human) Cell Lysate at 30 ug Primary: Anti- STARD8 (bs-6159R) at 1/1000 dilution Secondary: IRDye800CW Goat Anti-Rabbit IgG at 1/20000 dilution Predicted band size: 113 kD Observed band size: 113 kD