

**bs-1291R****[ Primary Antibody ]**

www.bioss.com.cn

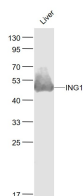
sales@bioss.com.cn

techsupport@bioss.com.cn

400-901-9800

**ING1 Rabbit pAb****— DATASHEET —**

<b>Host:</b> Rabbit	<b>Isotype:</b> IgG	<b>Applications:</b> WB (1:500-2000)
<b>Clonality:</b> Polyclonal		<b>Reactivity:</b> Mouse (predicted: Human, Rat)
<b>GeneID:</b> 3621	<b>SWISS:</b> Q9UK53	
<b>Target:</b> ING1		<b>Predicted MW.:</b> 46 kDa
<b>Immunogen:</b> KLH conjugated synthetic peptide derived from human inhibitor of growth gene 1: 301-422/422.		<b>Subcellular Location:</b> Nucleus
<b>Purification:</b> affinity purified by Protein A		
<b>Concentration:</b> 1mg/ml		
<b>Storage:</b> 0.01M TBS (pH7.4) with 1% BSA, 0.02% Proclin300 and 50% Glycerol. Shipped at 4°C. Store at -20°C for one year. Avoid repeated freeze/thaw cycles.		
<b>Background:</b> This gene encodes a tumor suppressor protein that can induce cell growth arrest and apoptosis. The encoded protein is a nuclear protein that physically interacts with the tumor suppressor protein TP53 and is a component of the p53 signaling pathway. Reduced expression and rearrangement of this gene have been detected in various cancers. Multiple alternatively spliced transcript variants encoding distinct isoforms have been reported. [provided by RefSeq, Jul 2008]		

**— VALIDATION IMAGES —**

Sample: Liver (Mouse) Lysate at 40 ug Primary:  
Anti- ING1 (bs-1291R) at 1/1000 dilution  
Secondary: IRDye800CW Goat Anti-Rabbit IgG at  
1/20000 dilution Predicted band size: 46 kD  
Observed band size: 46 kD