

bs-1199R**[Primary Antibody]****PAX1 Rabbit pAb**

Bioss
ANTIBODIES

www.bioss.com.cn

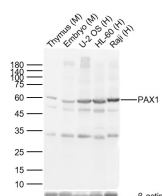
sales@bioss.com.cn

techsupport@bioss.com.cn

400-901-9800

— DATASHEET —

Host: Rabbit	Isotype: IgG	Applications: WB (1:500-2000)
Clonality: Polyclonal		Reactivity: Human, Mouse (predicted: Rat, Rabbit, Pig, Sheep, Cow, Dog)
GeneID: 5075	SWISS: P15863	Predicted MW.: 55 kDa
Target: PAX1		Subcellular Location: Nucleus
Immunogen: KLH conjugated synthetic peptide derived from human PAX1: 151-250/534.		
Purification: affinity purified by Protein A		
Concentration: 1mg/ml		
Storage: 0.01M TBS (pH7.4) with 1% BSA, 0.02% Proclin300 and 50% Glycerol. Shipped at 4°C. Store at -20°C for one year. Avoid repeated freeze/thaw cycles.		
Background: This gene is a member of the paired box (PAX) family of transcription factors. Members of the PAX family typically contain a paired box domain and a paired-type homeodomain. These genes play critical roles during fetal development. This gene plays a role in pattern formation during embryogenesis and may be essential for development of the vertebral column. This gene is silenced by methylation in ovarian and cervical cancers and may be a tumor suppressor gene. Mutations in this gene are also associated with vertebral malformations. [provided by RefSeq, Mar 2012]		

— VALIDATION IMAGES —

Sample: Lane 1: Mouse Thymus Lysates Lane 2: Mouse Embryo Lysates Lane 3: Human U-2 OS cell Lysates Lane 4: Human HL-60 cell Lysates Lane 5: Human Raji cell Lysates Primary: Anti-PAX1 (bs-1199R) at 1/1000 dilution Secondary: IRDye800CW Goat Anti-Rabbit IgG at 1/20000 dilution Predicted band size: 55kDa Observed band size: 60kDa