

bs-5757R

[Primary Antibody]

FAM13B1 Rabbit pAb

Bioss
ANTIBODIES

www.bioss.com.cn

sales@bioss.com.cn

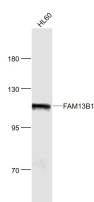
techsupport@bioss.com.cn

400-901-9800

— DATASHEET —

Host: Rabbit	Isotype: IgG	Applications: WB (1:500-2000)
Clonality: Polyclonal		
GeneID: 51306	SWISS: Q9NYF5	
Target: FAM13B1		
Immunogen: KLH conjugated synthetic peptide derived from human FAM13B1: 841-915/915.		
Purification: affinity purified by Protein A		Reactivity: Human (predicted: Mouse, Rat, Rabbit, Pig, Sheep, Cow, Horse)
Concentration: 1mg/ml		Predicted MW.: 105 kDa
Storage: 0.01M TBS (pH7.4) with 1% BSA, 0.02% Proclin300 and 50% Glycerol. Shipped at 4°C. Store at -20°C for one year. Avoid repeated freeze/thaw cycles.		Subcellular Location: Cytoplasm

— VALIDATION IMAGES —



Sample: HL60 (Human) Cell Lysate at 30 ug
Primary: Anti- FAM13B1 (bs-5757R) at 1/1000 dilution
Secondary: IRDye800CW Goat Anti-Rabbit IgG at 1/20000 dilution
Predicted band size: 105 kD
Observed band size: 105 kD