

[Primary Antibody]

phospho-Vimentin (Ser56) Rabbit pAb



BioSS
ANTIBODIES

www.bioss.com.cn

sales@bioass.com.cn

techsupport@bioss.com.cn

400-901-9800

— DATASHEET

Host: Rabbit

Isotype: IgG

Clonality: Polyclonal

GeneID: 7431

SWISS: P08670

Target: Vimentin (Ser56)

Immunogen: KLH conjugated Synthesised phosphopeptide derived from human Vimentin around the phosphorylation site of Ser56: S(p-S)PG.

Purification: affinity purified by Protein A

Concentration: 1mg/ml

Storage: 0.01M TBS (pH7.4) with 1% BSA, 0.02% Proclin300 and 50% Glycerol.

Shipped at 4°C. Store at -20°C for one year. Avoid repeated freeze/thaw cycles.

Background: This gene encodes a member of the intermediate filament family. Intermediate filaments, along with microtubules and actin microfilaments, make up the cytoskeleton. The protein encoded by this gene is responsible for maintaining cell shape, integrity of the cytoplasm, and stabilizing cytoskeletal interactions. It is also involved in the immune response, and controls the transport of low-density lipoprotein (LDL)-derived cholesterol from a lysosome to the site of esterification. It functions as an organizer of a number of critical proteins involved in attachment, migration, and cell signaling. Mutations in this gene causes a dominant, pulverulent cataract. [provided by RefSeq, Jun 2009]

Applications: WB (1:500-2000)

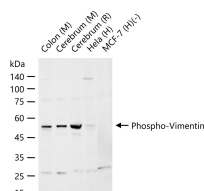
Flow-Cyt (0.2µg /Test)

Reactivity: Human, Mouse, Rat

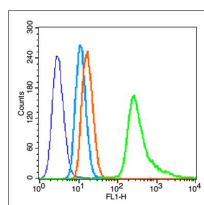
Predicted MW.: 51 kDa

Subcellular Location: Cytoplasm

— VALIDATION IMAGES



25 ug total protein per lane of various lysates (see on figure) probed with Phospho-Vimentin polyclonal antibody, unconjugated (bs-3471R) at 1:1000 dilution and 4°C overnight incubation. Followed by conjugated secondary antibody incubation at r.t. for 60 min.



Blank control (blue line): HeLa (fixed with 80% methanol (5 min at -20°C) and then permeabilized with 0.1% PBS-Tween for 20 min at room temperature). Primary Antibody (green line): Rabbit Anti- Phospho-Vimentin (Ser56) antibody (bs-3471R), Dilution: 0.2μg /10⁶ cells; Isotype Control Antibody (orange line): Rabbit IgG . Secondary Antibody (white blue line): Goat anti-rabbit IgG-FITC, Dilution: 1μg /test.