

**bs-3080R****[ Primary Antibody ]****phospho-CYLD (Ser418) Rabbit pAb****BioSS**  
**ANTIBODIES**

www.bioss.com.cn

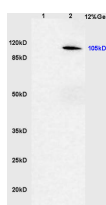
sales@bioss.com.cn

techsupport@bioss.com.cn

400-901-9800

**— DATASHEET —**

<b>Host:</b> Rabbit <b>Clonality:</b> Polyclonal <b>GeneID:</b> 1540 <b>Target:</b> CYLD (Ser418) <b>Immunogen:</b> KLH conjugated Synthesised phosphopeptide derived from human CYLD around the phosphorylation site of Ser418: FH(p-S)LP. <b>Purification:</b> affinity purified by Protein A <b>Concentration:</b> 1mg/ml <b>Storage:</b> 0.01M TBS (pH7.4) with 1% BSA, 0.02% Proclin300 and 50% Glycerol. Shipped at 4°C. Store at -20°C for one year. Avoid repeated freeze/thaw cycles. <b>Background:</b> Defects in CYLD are the cause of familial cylindromatosis (CYLD) also known as turban tumor syndrome or dermal eccrine cylindromatosis. CYLD is an autosomal dominant and highly tumor type-specific disorder. The tumors (known as cylindromas because of their characteristic microscopic architecture) are believed to arise from or recapitulate the appearance of the eccrine or apocrine cells of the skin that secrete sweat and scent respectively. Cylindromas arise predominantly in hairy parts of the body with approximately 90% on the head and neck. The development of a confluent mass which may ulcerate or become infected has led to the designation "turban tumor syndrome". The skin tumors show differentiation in the direction of hair structures, hence the synonym trichoepithelioma. CYLD has deubiquitinating activity.	<b>Isotype:</b> IgG <b>SWISS:</b> Q9NQC7	<b>Applications:</b> WB (1:500-2000) <b>Reactivity:</b> Mouse (predicted: Human, Rat, Pig, Cow, Dog, Horse) <b>Predicted MW.:</b> 105 kDa <b>Subcellular Location:</b> Cell membrane ,Cytoplasm
---	---	--

**— VALIDATION IMAGES —**

Sample: Lane1: Heart (Mouse) Lysate at 30 ug  
Lane2: Sp2/0 (Mouse) Cell Lysate at 30 ug  
Primary: Anti-phospho-CYLD(Ser418) (bs-3080R)  
at 1:200 dilution; Secondary: HRP conjugated  
Goat Anti-Rabbit IgG(bs-0295G-HRP) at 1: 3000  
dilution; Predicted band size : 105kD Observed  
band size : 105kD