

bs-3077R**[Primary Antibody]****phospho-MCSF Receptor (Tyr723) Rabbit pAb****Bioss**
ANTIBODIES

www.bioss.com.cn

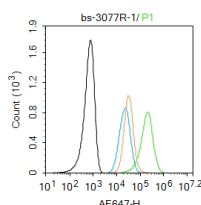
sales@bioss.com.cn

techsupport@bioss.com.cn

400-901-9800

— DATASHEET —

<p>Host: Rabbit</p> <p>Clonality: Polyclonal</p> <p>GeneID: 1436</p> <p>Target: MCSF Receptor (Tyr723)</p> <p>Immunogen: KLH conjugated Synthesised phosphopeptide derived from human CSF1R around the phosphorylation site of tyrosine 723: DT(p-Y)VE.</p> <p>Purification: affinity purified by Protein A</p> <p>Concentration: 1mg/ml</p> <p>Storage: 0.01M TBS (pH7.4) with 1% BSA, 0.02% Proclin300 and 50% Glycerol. Shipped at 4°C. Store at -20°C for one year. Avoid repeated freeze/thaw cycles.</p> <p>Background: This protein tyrosine kinase transmembrane receptor is the receptor for colony stimulating factor 1, a cytokine which controls the production, differentiation, and function of macrophages. This receptor mediates most if not all of the biological effects of this cytokine. Ligand binding activates the receptor kinase through a process of oligomerization and transphosphorylation. The encoded protein is a member of the CSF1/PDGF receptor family of tyrosine protein kinases and contains 5 immunoglobulin like C2 type domains. CD115 is expressed by cells of the monocytic lineage and by progenitor cells. Mutations in this gene have been associated with a predisposition to myeloid malignancy.</p>	<p>Isotype: IgG</p> <p>SWISS: P07333</p> <p>Applications: Flow-Cyt (1ug/Test)</p> <p>Reactivity: Human (predicted: Mouse, Rat, Cow, Dog, Horse)</p> <p>Predicted MW.: 107 kDa</p> <p>Subcellular Location: Cell membrane</p>
--	--

— VALIDATION IMAGES —

Blank control: Raw264.7. Primary Antibody (green line): Rabbit Anti-phospho-MCSF Receptor (Tyr723) antibody (bs-3077R) Dilution: 1µg /10⁶ cells; Isotype Control Antibody (orange line): Rabbit IgG . Secondary Antibody : Goat anti-rabbit IgG-AF647 Dilution: 1µg /test. Protocol The cells were incubated in 5%BSA to block non-specific protein-protein interactions for 30 min at room temperature .Cells stained with Primary Antibody for 30 min at room temperature. The secondary antibody used for 40 min at room temperature. Acquisition of 20,000 events was performed.

— SELECTED CITATIONS —

- **[IF=1.86]** Król, Magdalena, et al. "CSF-1R as an inhibitor of apoptosis and promoter of proliferation, migration and invasion of canine mammary cancer cells." BMC veterinary research 9.1 (2013): 65. WB ;="". 23561040