

bsm-60630R**[Primary Antibody]**

Bioss
ANTIBODIES

www.bioss.com.cn

sales@bioss.com.cn

techsupport@bioss.com.cn

400-901-9800

WWOX Recombinant Rabbit mAb

— DATASHEET —

Host: Rabbit**Clonality:** Recombinant**Target:** WWOX**Purification:** affinity purified by Protein A**Concentration:** 1mg/ml

Storage: 0.01M TBS (pH7.4) with 1% BSA, 0.02% Proclin300 and 50% Glycerol.
Shipped at 4°C. Store at -20°C for one year. Avoid repeated freeze/thaw cycles.

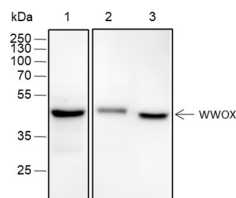
Background: WW domain-containing proteins are found in all eukaryotes and play an important role in the regulation of a wide variety of cellular functions such as protein degradation, transcription, and RNA splicing. This gene encodes a protein which contains 2 WW domains and a short-chain dehydrogenase/reductase domain (SRD). The highest normal expression of this gene is detected in hormonally regulated tissues such as testis, ovary, and prostate. This expression pattern and the presence of an SRD domain suggest a role for this gene in steroid metabolism. The encoded protein is more than 90% identical to the mouse protein, which is an essential mediator of tumor necrosis factor-alpha-induced apoptosis, suggesting a similar, important role in apoptosis for the human protein. In addition, there is evidence that this gene behaves as a suppressor of tumor growth. Alternative splicing of this gene generates transcript variants that encode different isoforms. [provided by RefSeq, Jul 2008]

Isotype: IgG**CloneNo.:** F11B6**Applications:** WB (1:500-1:2000)**IHC-P** (1:100-500)**IHC-F** (1:100-500)**IF****Flow-Cyt** (1:25)**ICC/IF** (1:50)

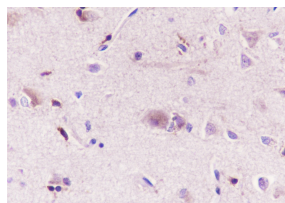
Reactivity: Human, Rat
(predicted: Mouse)

Subcellular Location: Cytoplasm ,Nucleus

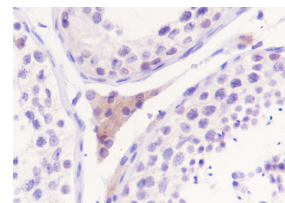
— VALIDATION IMAGES —



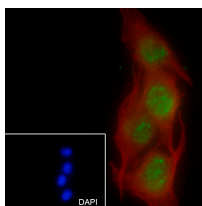
Blocking buffer: 5% NFD/MTBST Primary ab dilution: 1:2000 Primary ab incubation condition: 2 hours at room temperature Secondary ab: Goat Anti-Rabbit IgG H&L (HRP) Lysate: 1: MCF-7, 2: Mouse ovary, 3: Rat brain Protein loading quantity: 20 µg Exposure time: 60 s Predicted MW: 47 kDa Observed MW: 47 kDa



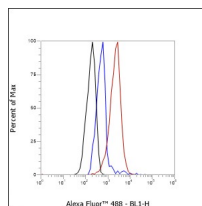
Tissue: Human cerebrum Section type: Formalin fixed & Paraffin -embedded section Retrieval method: High temperature and high pressure Retrieval buffer: Tris/EDTA buffer, pH 9.0 Primary ab dilution: 1:100 Primary ab incubation condition: 4°C overnight Secondary ab: SP Kit(Rabbit) (sp-0023) Counter stain: Hematoxylin (Blue) Comment: Color brown is the positive signal for bsm-60630R



Tissue: Human testis Section type: Formalin fixed & Paraffin -embedded section Retrieval method: High temperature and high pressure Retrieval buffer: Tris/EDTA buffer, pH 9.0 Primary ab dilution: 1:100 Primary ab incubation condition: 1 hour at room temperature Secondary ab: SP Kit(Rabbit) (sp-0023) Counter stain: Hematoxylin (Blue) Comment: Color brown is the positive signal for bsm-60630R



Cell line: A549 Fixative: 100% Ice-cold methanol Permeabilization: 0.1% TritonX-100 Primary ab dilution: 1:50 Primary incubation condition: 4°C overnight Secondary ab: Goat Anti-Rabbit IgG



Cell line: MCF-7 Fixation: 4% Paraformaldehyde Permeabilization: 90% Methanol Primary Ab dilution: 1:50 Secondary Ab: Goat Anti-Rabbit IgG Unlabelled control: The cell without

Important Note: This product as supplied is intended for research use only, not for use in human, therapeutic or diagnostic applications.

Nuclear counter stain: DAPI (Blue) Counter stain:
Tubulin (Red) Comment: Color green is the
positive signal for bsm-60630R

incubation with primary antibody and secondary
antibody (Black line). Isotype control: Rabbit
monoclonal IgG (Blue line). Comment: Line red is
the positive signal for bsm-60630R